

Anti-TUG Rabbit Monoclonal Antibody
Catalog # ABO16154**Specification**

Anti-TUG Rabbit Monoclonal Antibody - Product Information

Application	WB, IHC
Primary Accession	Q9BZE9
Host	Rabbit
Isotype	IgG
Reactivity	Rat, Human, Mouse
Clonality	Monoclonal
Format	Liquid

Description

Anti-TUG Rabbit Monoclonal Antibody . Tested in WB, IHC applications. This antibody reacts with Human, Mouse, Rat.

Anti-TUG Rabbit Monoclonal Antibody - Additional Information

Gene ID 79058

Other Names

Tether containing UBX domain for GLUT4, Alveolar soft part sarcoma chromosomal region candidate gene 1 protein, Alveolar soft part sarcoma locus, Renal papillary cell carcinoma protein 17, UBX domain-containing protein 9, ASPSCR1, ASPL, RCC17, TUG, UBXD9, UBXN9

Calculated MW

70-80 kDa KDa

Application Details

WB 1:500-1:2000
IHC 1:50-1:200

Contents

Rabbit IgG in phosphate buffered saline, pH 7.4, 150mM NaCl, 0.02% sodium azide and 50% glycerol, 0.4-0.5mg/ml BSA.

Immunogen

A synthesized peptide derived from human TUG

Purification

Affinity-chromatography

Storage

Store at -20°C for one year. For short term storage and frequent use, store at 4°C for up to one month. Avoid repeated freeze-thaw cycles.

Anti-TUG Rabbit Monoclonal Antibody - Protein Information

Name ASPSCR1

Synonyms ASPL, RCC17, TUG, UBXD9, UBXN9

Function

Tethering protein that sequesters GLUT4-containing vesicles in the cytoplasm in the absence of insulin. Modulates the amount of GLUT4 that is available at the cell surface (By similarity). Enhances VCP methylation catalyzed by VCPKMT.

Cellular Location

Endomembrane system; Peripheral membrane protein. Endoplasmic reticulum-Golgi intermediate compartment membrane; Peripheral membrane protein. Cytoplasm Nucleus

Tissue Location

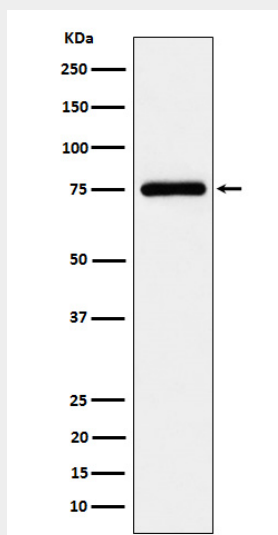
Ubiquitous. Highly expressed in testis, heart, skeletal muscle and pancreas.

Anti-TUG Rabbit Monoclonal Antibody - Protocols

Provided below are standard protocols that you may find useful for product applications.

- [Western Blot](#)
- [Blocking Peptides](#)
- [Dot Blot](#)
- [Immunohistochemistry](#)
- [Immunofluorescence](#)
- [Immunoprecipitation](#)
- [Flow Cytometry](#)
- [Cell Culture](#)

Anti-TUG Rabbit Monoclonal Antibody - Images



Western blot analysis of TUG expression in K562 cell lysate.