

Anti-GSTO1 Rabbit Monoclonal Antibody
Catalog # ABO16151

Specification

Anti-GSTO1 Rabbit Monoclonal Antibody - Product Information

Application	WB, IF, ICC
Primary Accession	P78417
Host	Rabbit
Isotype	IgG
Reactivity	Human
Clonality	Monoclonal
Format	Liquid

Description

Anti-GSTO1 Rabbit Monoclonal Antibody . Tested in WB, ICC/IF applications. This antibody reacts with Human.

Anti-GSTO1 Rabbit Monoclonal Antibody - Additional Information

Gene ID 9446

Other Names

Glutathione S-transferase omega-1, GSTO-1, 2.5.1.18, Glutathione S-transferase omega 1-1, GSTO 1-1, Glutathione-dependent dehydroascorbate reductase, 1.8.5.1, Monomethylarsonic acid reductase, MMA(V) reductase, 1.20.4.2, S-(Phenacyl)glutathione reductase, SPG-R, GSTO1, GSTTLP28

Calculated MW

28 kDa KDa

Application Details

WB 1:500-1:2000
ICC/IF 1:50-1:200

Contents

Rabbit IgG in phosphate buffered saline, pH 7.4, 150mM NaCl, 0.02% sodium azide and 50% glycerol, 0.4-0.5mg/ml BSA.

Immunogen

A synthesized peptide derived from human GSTO1

Purification

Affinity-chromatography

Storage

Store at -20°C for one year. For short term storage and frequent use, store at 4°C for up to one month. Avoid repeated freeze-thaw cycles.

Anti-GSTO1 Rabbit Monoclonal Antibody - Protein Information

Name GSTO1

Synonyms GSTTLP28

Function

Exhibits glutathione-dependent thiol transferase and dehydroascorbate reductase activities. Has S-(phenacyl)glutathione reductase activity. Has also glutathione S-transferase activity. Participates in the biotransformation of inorganic arsenic and reduces monomethylarsonic acid (MMA) and dimethylarsonic acid.

Cellular Location

Cytoplasm, cytosol.

Tissue Location

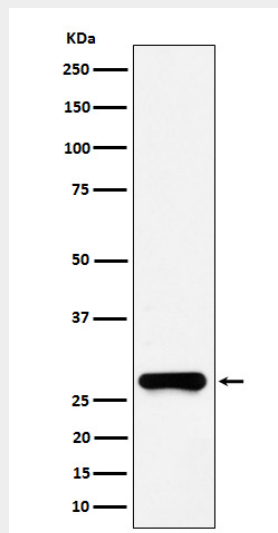
Ubiquitous. Highest expression in liver, pancreas, skeletal muscle, spleen, thymus, colon, blood leukocyte and heart. Lowest expression in brain, placenta and lung.

Anti-GSTO1 Rabbit Monoclonal Antibody - Protocols

Provided below are standard protocols that you may find useful for product applications.

- [Western Blot](#)
- [Blocking Peptides](#)
- [Dot Blot](#)
- [Immunohistochemistry](#)
- [Immunofluorescence](#)
- [Immunoprecipitation](#)
- [Flow Cytometry](#)
- [Cell Culture](#)

Anti-GSTO1 Rabbit Monoclonal Antibody - Images



Western blot analysis of GSTO1 expression in HeLa cell lysate.