

Anti-Prostein Rabbit Monoclonal Antibody
Catalog # ABO16149**Specification****Anti-Prostein Rabbit Monoclonal Antibody - Product Information**

Application	WB, IHC
Primary Accession	Q96JT2
Host	Rabbit
Isotype	IgG
Reactivity	Human
Clonality	Monoclonal
Format	Liquid

Description

Anti-Prostein Rabbit Monoclonal Antibody . Tested in WB, IHC applications. This antibody reacts with Human.

Anti-Prostein Rabbit Monoclonal Antibody - Additional Information

Gene ID 85414

Other Names

Solute carrier family 45 member 3, Prostate cancer-associated protein 6, Prostein, SLC45A3 ([HGNC:8642](http://www.genenames.org/cgi-bin/gene_symbol_report?hgnc_id=8642)), PCANAP6, PRST

Calculated MW

52 kDa KDa

Application Details

WB 1:500-1:2000
IHC 1:50-1:200

Contents

Rabbit IgG in phosphate buffered saline, pH 7.4, 150mM NaCl, 0.02% sodium azide and 50% glycerol, 0.4-0.5mg/ml BSA.

Immunogen

A synthesized peptide derived from human Prostein

Purification

Affinity-chromatography

Storage

Store at -20°C for one year. For short term storage and frequent use, store at 4°C for up to one month. Avoid repeated freeze-thaw cycles.

Anti-Prostein Rabbit Monoclonal Antibody - Protein Information

Name SLC45A3 ([HGNC:8642](#))

Synonyms PCANAP6, PRST

Function

Proton-associated sucrose transporter. May be able to transport also glucose and fructose.

Cellular Location

Membrane; Multi-pass membrane protein

Tissue Location

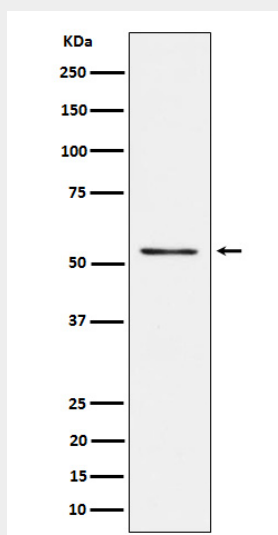
Prostate specific. Expressed in all prostatic glandular cells. Expressed both in normal and cancerous prostates

Anti-Prostein Rabbit Monoclonal Antibody - Protocols

Provided below are standard protocols that you may find useful for product applications.

- [Western Blot](#)
- [Blocking Peptides](#)
- [Dot Blot](#)
- [Immunohistochemistry](#)
- [Immunofluorescence](#)
- [Immunoprecipitation](#)
- [Flow Cytometry](#)
- [Cell Culture](#)

Anti-Prostein Rabbit Monoclonal Antibody - Images



Western blot analysis of Prostein expression in LnCaP cell lysate.