

Anti-HFE Rabbit Monoclonal Antibody
Catalog # ABO16141

Specification

Anti-HFE Rabbit Monoclonal Antibody - Product Information

Application	WB
Primary Accession	Q30201
Host	Rabbit
Isotype	IgG
Reactivity	Human
Clonality	Monoclonal
Format	Liquid

Description

Anti-HFE Rabbit Monoclonal Antibody . Tested in WB application. This antibody reacts with Human.

Anti-HFE Rabbit Monoclonal Antibody - Additional Information

Gene ID 3077

Other Names

Hereditary hemochromatosis protein, HLA-H, HFE, HLAH

Calculated MW

40 kDa KDa

Application Details

WB 1:500-1:2000

Contents

Rabbit IgG in phosphate buffered saline, pH 7.4, 150mM NaCl, 0.02% sodium azide and 50% glycerol, 0.4-0.5mg/ml BSA.

Immunogen

A synthesized peptide derived from human HFE

Purification

Affinity-chromatography

Storage

Store at -20°C for one year. For short term storage and frequent use, store at 4°C for up to one month. Avoid repeated freeze-thaw cycles.

Anti-HFE Rabbit Monoclonal Antibody - Protein Information

Name HFE

Synonyms HLAH

Function

Binds to transferrin receptor (TFR) and reduces its affinity for iron-loaded transferrin.

Cellular Location

Cell membrane; Single-pass type I membrane protein

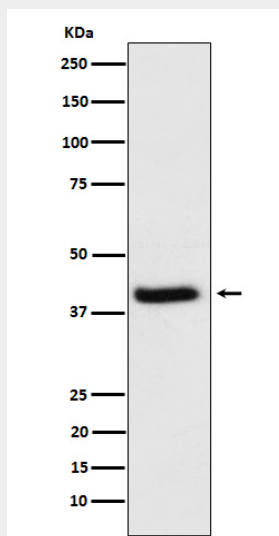
Tissue Location

Expressed in all tissues tested except brain.

Anti-HFE Rabbit Monoclonal Antibody - Protocols

Provided below are standard protocols that you may find useful for product applications.

- [Western Blot](#)
- [Blocking Peptides](#)
- [Dot Blot](#)
- [Immunohistochemistry](#)
- [Immunofluorescence](#)
- [Immunoprecipitation](#)
- [Flow Cytometry](#)
- [Cell Culture](#)

Anti-HFE Rabbit Monoclonal Antibody - Images

Western blot analysis of HFE expression in HeLa cell lysate.