

Anti-CTNNBIP1 Rabbit Monoclonal Antibody Catalog # ABO16138

Specification

Anti-CTNNBIP1 Rabbit Monoclonal Antibody - Product Information

Application	WB, IP, FC
Primary Accession	Q9NSA3
Host	Rabbit
Isotype	IgG
Reactivity	Human
Clonality	Monoclonal
Format	Liquid

Description

Anti-CTNNBIP1 Rabbit Monoclonal Antibody . Tested in WB, IP, Flow Cytometry applications. This antibody reacts with Human.

Anti-CTNNBIP1 Rabbit Monoclonal Antibody - Additional Information

Gene ID 56998

Other Names

Beta-catenin-interacting protein 1, Inhibitor of beta-catenin and Tcf-4, CTNNBIP1, ICAT

Calculated MW

12 kDa KDa

Application Details

WB 1:500-1:2000
IP 1:50
FC 1:50

Contents

Rabbit IgG in phosphate buffered saline, pH 7.4, 150mM NaCl, 0.02% sodium azide and 50% glycerol, 0.4-0.5mg/ml BSA.

Immunogen

A synthesized peptide derived from human CTNNBIP1

Purification

Affinity-chromatography

Storage

Store at -20°C for one year. For short term storage and frequent use, store at 4°C for up to one month. Avoid repeated freeze-thaw cycles.

Anti-CTNNBIP1 Rabbit Monoclonal Antibody - Protein Information

Name CTNNBIP1

Synonyms ICAT

Function

Prevents the interaction between CTNNB1 and TCF family members, and acts as a negative regulator of the Wnt signaling pathway.

Cellular Location

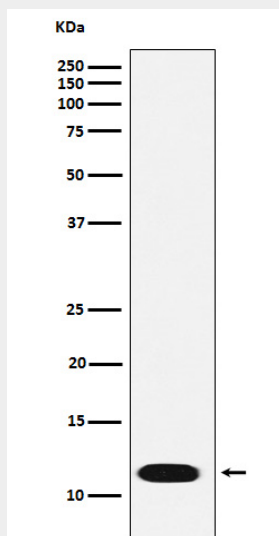
Cytoplasm. Nucleus.

Anti-CTNNBIP1 Rabbit Monoclonal Antibody - Protocols

Provided below are standard protocols that you may find useful for product applications.

- [Western Blot](#)
- [Blocking Peptides](#)
- [Dot Blot](#)
- [Immunohistochemistry](#)
- [Immunofluorescence](#)
- [Immunoprecipitation](#)
- [Flow Cytometry](#)
- [Cell Culture](#)

Anti-CTNNBIP1 Rabbit Monoclonal Antibody - Images



Western blot analysis of CTNNBIP1 expression in 293T cell lysate.