

Anti-MGST1 Rabbit Monoclonal Antibody Catalog # ABO16137

Specification

Anti-MGST1 Rabbit Monoclonal Antibody - Product Information

Application	WB, IHC, IF, ICC, FC
Primary Accession	P10620
Host	Rabbit
Isotype	IgG
Reactivity	Rat, Human, Mouse
Clonality	Monoclonal
Format	Liquid

Description

Anti-MGST1 Rabbit Monoclonal Antibody . Tested in WB, IHC, ICC/IF, Flow Cytometry applications. This antibody reacts with Human, Mouse, Rat.

Anti-MGST1 Rabbit Monoclonal Antibody - Additional Information

Gene ID 4257

Other Names

Microsomal glutathione S-transferase 1, Microsomal GST-1, 2.5.1.18, Microsomal GST-I, MGST1, GST12, MGST

Calculated MW

17 kDa KDa

Application Details

WB 1:500-1:2000
IHC 1:50-1:200
ICC/IF 1:50-1:200
FC 1:50

Contents

Rabbit IgG in phosphate buffered saline, pH 7.4, 150mM NaCl, 0.02% sodium azide and 50% glycerol, 0.4-0.5mg/ml BSA.

Immunogen

A synthesized peptide derived from human MGST1

Purification

Affinity-chromatography

Storage

Store at -20°C for one year. For short term storage and frequent use, store at 4°C for up to one month. Avoid repeated freeze-thaw cycles.

Anti-MGST1 Rabbit Monoclonal Antibody - Protein Information

Name MGST1

Synonyms GST12, MGST

Function

Conjugation of reduced glutathione to a wide number of exogenous and endogenous hydrophobic electrophiles.

Cellular Location

Endoplasmic reticulum membrane {ECO:0000250|UniProtKB:P08011}; Multi-pass membrane protein. Mitochondrion outer membrane {ECO:0000250|UniProtKB:P08011}

Tissue Location

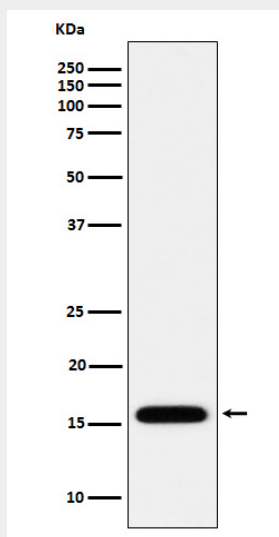
Highly expressed in liver.

Anti-MGST1 Rabbit Monoclonal Antibody - Protocols

Provided below are standard protocols that you may find useful for product applications.

- [Western Blot](#)
- [Blocking Peptides](#)
- [Dot Blot](#)
- [Immunohistochemistry](#)
- [Immunofluorescence](#)
- [Immunoprecipitation](#)
- [Flow Cytometry](#)
- [Cell Culture](#)

Anti-MGST1 Rabbit Monoclonal Antibody - Images



Western blot analysis of MGST1 expression in HepG2 cell lysate.