

**Anti-RGMA Rabbit Monoclonal Antibody**  
Catalog # ABO16133**Specification****Anti-RGMA Rabbit Monoclonal Antibody - Product Information**

Application	WB, IF, ICC
Primary Accession	<a href="#">Q96B86</a>
Host	Rabbit
Isotype	IgG
Reactivity	Rat, Human, Mouse
Clonality	Monoclonal
Format	Liquid

**Description**

Anti-RGMA Rabbit Monoclonal Antibody . Tested in WB, ICC/IF applications. This antibody reacts with Human, Mouse, Rat.

**Anti-RGMA Rabbit Monoclonal Antibody - Additional Information**

**Gene ID** 56963

**Other Names**

Repulsive guidance molecule A, RGM domain family member A, RGMA ([HGNC:30308](http://www.genenames.org/cgi-bin/gene_symbol_report?hgnc_id=30308)), RGM

**Calculated MW**

37 kDa KDa

**Application Details**

WB 1:500-1:2000<br>ICC/IF 1:50-1:200

**Contents**

Rabbit IgG in phosphate buffered saline, pH 7.4, 150mM NaCl, 0.02% sodium azide and 50% glycerol, 0.4-0.5mg/ml BSA.

**Immunogen**

A synthesized peptide derived from human RGMA

**Purification**

Affinity-chromatography

**Storage**

**Store at -20°C for one year. For short term storage and frequent use, store at 4°C for up to one month. Avoid repeated freeze-thaw cycles.**

**Anti-RGMA Rabbit Monoclonal Antibody - Protein Information**

**Name** RGMA ([HGNC:30308](#))

**Synonyms** RGM

**Function**

Member of the repulsive guidance molecule (RGM) family that performs several functions in the developing and adult nervous system. Regulates cephalic neural tube closure, inhibits neurite outgrowth and cortical neuron branching, and the formation of mature synapses. Binding to its receptor NEO1/neogenin induces activation of RHOA- ROCK1/Rho-kinase signaling pathway through UNC5B-ARHGEF12/LARG- PTK2/FAK1 cascade, leading to collapse of the neuronal growth cone and neurite outgrowth inhibition. Furthermore, RGMA binding to NEO1/neogenin leads to HRAS inactivation by influencing HRAS-PTK2/FAK1- AKT1 pathway. It also functions as a bone morphogenetic protein (BMP) coreceptor that may signal through SMAD1, SMAD5, and SMAD8.

**Cellular Location**

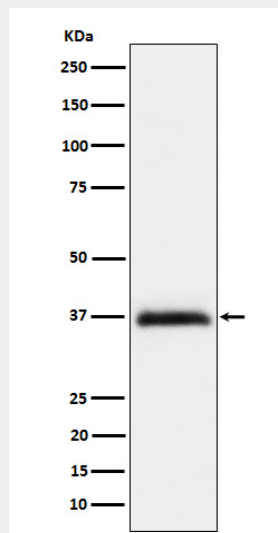
Cell membrane; Lipid-anchor, GPI- anchor

**Anti-RGMA Rabbit Monoclonal Antibody - Protocols**

Provided below are standard protocols that you may find useful for product applications.

- [Western Blot](#)
- [Blocking Peptides](#)
- [Dot Blot](#)
- [Immunohistochemistry](#)
- [Immunofluorescence](#)
- [Immunoprecipitation](#)
- [Flow Cytometry](#)
- [Cell Culture](#)

**Anti-RGMA Rabbit Monoclonal Antibody - Images**



Western blot analysis of RGMA expression in HeLa cell lysate.