

**Anti-Erlin-2 Rabbit Monoclonal Antibody**  
Catalog # ABO16117**Specification****Anti-Erlin-2 Rabbit Monoclonal Antibody - Product Information**

Application	WB, IHC, IF, ICC
Primary Accession	<a href="#">O94905</a>
Host	Rabbit
Isotype	IgG
Reactivity	Human, Mouse
Clonality	Monoclonal
Format	Liquid

**Description**

Anti-Erlin-2 Rabbit Monoclonal Antibody . Tested in WB, IHC, ICC/IF applications. This antibody reacts with Human, Mouse.

**Anti-Erlin-2 Rabbit Monoclonal Antibody - Additional Information**

**Gene ID** 11160

**Other Names**

Erlin-2, Endoplasmic reticulum lipid raft-associated protein 2, Stomatin-prohibitin-flotillin-HflC/K domain-containing protein 2, SPFH domain-containing protein 2, ERLIN2, C8orf2, SPFH2

**Calculated MW**

38 kDa KDa

**Application Details**

WB 1:500-1:2000<br>IHC 1:50-1:200<br>ICC/IF 1:50-1:200

**Contents**

Rabbit IgG in phosphate buffered saline, pH 7.4, 150mM NaCl, 0.02% sodium azide and 50% glycerol, 0.4-0.5mg/ml BSA.

**Immunogen**

A synthesized peptide derived from human Erlin-2

**Purification**

Affinity-chromatography

**Storage**

**Store at -20°C for one year. For short term storage and frequent use, store at 4°C for up to one month. Avoid repeated freeze-thaw cycles.**

**Anti-Erlin-2 Rabbit Monoclonal Antibody - Protein Information**

**Name** ERLIN2

**Synonyms** C8orf2, SPFH2**Function**

Component of the ERLIN1/ERLIN2 complex which mediates the endoplasmic reticulum-associated degradation (ERAD) of inositol 1,4,5- trisphosphate receptors (IP3Rs) such as ITPR1 (PubMed:<a href="http://www.uniprot.org/citations/17502376" target="\_blank">17502376</a>, PubMed:<a href="http://www.uniprot.org/citations/19240031" target="\_blank">19240031</a>). Promotes sterol-accelerated ERAD of HMGCR probably implicating an AMFR/gp78-containing ubiquitin ligase complex (PubMed:<a href="http://www.uniprot.org/citations/21343306" target="\_blank">21343306</a>). Involved in regulation of cellular cholesterol homeostasis by regulation the SREBP signaling pathway. May promote ER retention of the SCAP-SREBF complex (PubMed:<a href="http://www.uniprot.org/citations/24217618" target="\_blank">24217618</a>).

**Cellular Location**

Endoplasmic reticulum membrane; Single-pass type II membrane protein. Note=Associated with lipid raft-like domains of the endoplasmic reticulum membrane

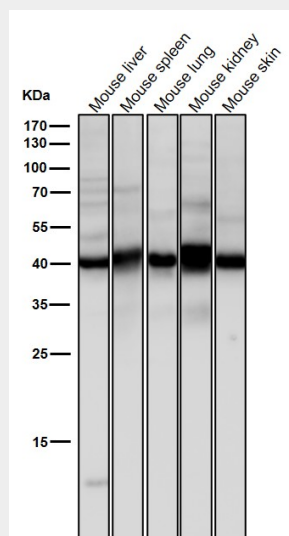
**Tissue Location**

Ubiquitous..

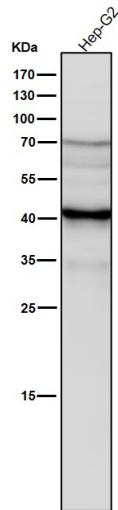
**Anti-Erlin-2 Rabbit Monoclonal Antibody - Protocols**

Provided below are standard protocols that you may find useful for product applications.

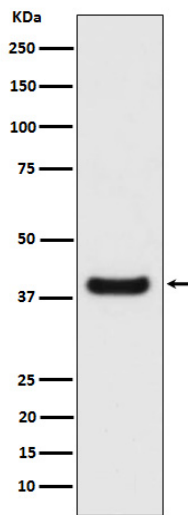
- [Western Blot](#)
- [Blocking Peptides](#)
- [Dot Blot](#)
- [Immunohistochemistry](#)
- [Immunofluorescence](#)
- [Immunoprecipitation](#)
- [Flow Cytometry](#)
- [Cell Culture](#)

**Anti-Erlin-2 Rabbit Monoclonal Antibody - Images**

All lanes use the Antibody at 1:5K dilution for 1 hour at room temperature.



All lanes use the Antibody at 1:5K dilution for 1 hour at room temperature.



Western blot analysis of Erlin-2 expression in HeLa cell lysate.