

Anti-SUOX Rabbit Monoclonal Antibody
Catalog # ABO16113

Specification

Anti-SUOX Rabbit Monoclonal Antibody - Product Information

Application	WB, IHC
Primary Accession	P51687
Host	Rabbit
Isotype	IgG
Reactivity	Rat, Human
Clonality	Monoclonal
Format	Liquid

Description

Anti-SUOX Rabbit Monoclonal Antibody . Tested in WB, IHC applications. This antibody reacts with Human, Rat.

Anti-SUOX Rabbit Monoclonal Antibody - Additional Information

Gene ID 6821

Other Names

Sulfite oxidase, mitochondrial, 1.8.3.1, SUOX

Calculated MW

60 kDa KDa

Application Details

WB 1:500-1:2000
IHC 1:50-1:200

Contents

Rabbit IgG in phosphate buffered saline, pH 7.4, 150mM NaCl, 0.02% sodium azide and 50% glycerol, 0.4-0.5mg/ml BSA.

Immunogen

A synthesized peptide derived from human SUOX

Purification

Affinity-chromatography

Storage

Store at -20°C for one year. For short term storage and frequent use, store at 4°C for up to one month. Avoid repeated freeze-thaw cycles.

Anti-SUOX Rabbit Monoclonal Antibody - Protein Information

Name SUOX

Function

Catalyzes the oxidation of sulfite to sulfate, the terminal reaction in the oxidative degradation of sulfur-containing amino acids.

Cellular Location

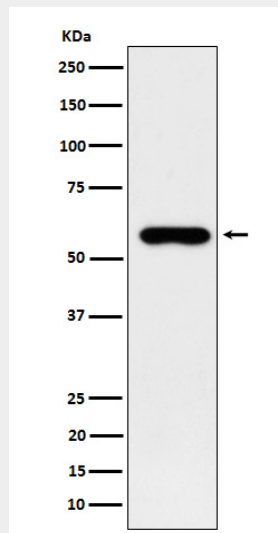
Mitochondrion intermembrane space {ECO:0000250|UniProtKB:Q07116}

Anti-SUOX Rabbit Monoclonal Antibody - Protocols

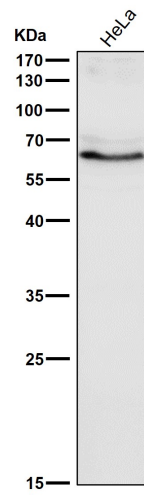
Provided below are standard protocols that you may find useful for product applications.

- [Western Blot](#)
- [Blocking Peptides](#)
- [Dot Blot](#)
- [Immunohistochemistry](#)
- [Immunofluorescence](#)
- [Immunoprecipitation](#)
- [Flow Cytometry](#)
- [Cell Culture](#)

Anti-SUOX Rabbit Monoclonal Antibody - Images



Western blot analysis of SUOX expression in 293T cell lysate.



All lanes use the Antibody at 1:1W dilution for 1 hour at room temperature.