

Anti-Olig3 Rabbit Monoclonal Antibody Catalog # ABO16102

Specification

Anti-Olig3 Rabbit Monoclonal Antibody - Product Information

Application	WB, IF, ICC
Primary Accession	O7RTU3
Host	Rabbit
Isotype	IgG
Reactivity	Human
Clonality	Monoclonal
Format	Liquid

Description

Anti-Olig3 Rabbit Monoclonal Antibody . Tested in WB, ICC/IF applications. This antibody reacts with Human.

Anti-Olig3 Rabbit Monoclonal Antibody - Additional Information

Gene ID 167826

Other Names

Oligodendrocyte transcription factor 3, Oligo3, Class B basic helix-loop-helix protein 7, bHLHb7, Class E basic helix-loop-helix protein 20, bHLHe20, OLIG3, BHLHB7, BHLHE20

Calculated MW

29 kDa KDa

Application Details

WB 1:500-1:2000
ICC/IF 1:50-1:200

Contents

Rabbit IgG in phosphate buffered saline, pH 7.4, 150mM NaCl, 0.02% sodium azide and 50% glycerol, 0.4-0.5mg/ml BSA.

Immunogen

A synthesized peptide derived from human Olig3

Purification

Affinity-chromatography

Storage

Store at -20°C for one year. For short term storage and frequent use, store at 4°C for up to one month. Avoid repeated freeze-thaw cycles.

Anti-Olig3 Rabbit Monoclonal Antibody - Protein Information

Name OLIG3

Synonyms BHLHB7, BHLHE20

Function

May determine the distinct specification program of class A neurons in the dorsal part of the spinal cord and suppress specification of class B neurons.

Cellular Location

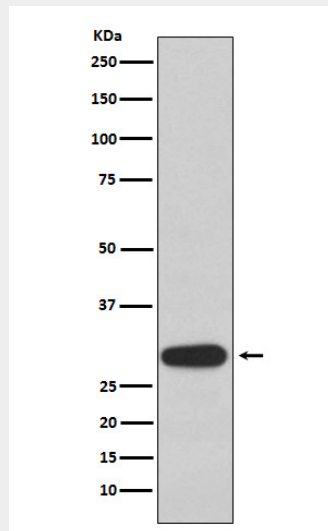
Nucleus {ECO:0000255|PROSITE-ProRule:PRU00981}.

Anti-Olig3 Rabbit Monoclonal Antibody - Protocols

Provided below are standard protocols that you may find useful for product applications.

- [Western Blot](#)
- [Blocking Peptides](#)
- [Dot Blot](#)
- [Immunohistochemistry](#)
- [Immunofluorescence](#)
- [Immunoprecipitation](#)
- [Flow Cytometry](#)
- [Cell Culture](#)

Anti-Olig3 Rabbit Monoclonal Antibody - Images



Western blot analysis of Olig3 expression in 293T cell lysate.