

## Anti-CCL27 Rabbit Monoclonal Antibody Catalog # ABO16097

### Specification

---

#### Anti-CCL27 Rabbit Monoclonal Antibody - Product Information

Application	WB, IF, ICC, FC
Primary Accession	<a href="#">Q9Y4X3</a>
Host	Rabbit
Isotype	IgG
Reactivity	Rat, Human, Mouse
Clonality	Monoclonal
Format	Liquid

#### Description

Anti-CCL27 Rabbit Monoclonal Antibody . Tested in WB, ICC/IF, Flow Cytometry applications. This antibody reacts with Human, Mouse, Rat.

#### Anti-CCL27 Rabbit Monoclonal Antibody - Additional Information

Gene ID 10850

#### Other Names

C-C motif chemokine 27, CC chemokine ILC, Cutaneous T-cell-attracting chemokine, CTACK, ESkin, IL-11 R-alpha-locus chemokine, Skinkine, Small-inducible cytokine A27, CCL27, ILC, SCYA27

#### Calculated MW

13 kDa KDa

#### Application Details

WB 1:500-1:2000<br>ICC/IF 1:50-1:200<br>FC 1:50

#### Contents

Rabbit IgG in phosphate buffered saline, pH 7.4, 150mM NaCl, 0.02% sodium azide and 50% glycerol, 0.4-0.5mg/ml BSA.

#### Immunogen

A synthesized peptide derived from human CCL27

#### Purification

Affinity-chromatography

#### Storage

Store at -20°C for one year. For short term storage and frequent use, store at 4°C for up to one month. Avoid repeated freeze-thaw cycles.

#### Anti-CCL27 Rabbit Monoclonal Antibody - Protein Information

**Name** CCL27

**Synonyms** ILC, SCYA27

**Function**

Chemotactic factor that attracts skin-associated memory T- lymphocytes. May play a role in mediating homing of lymphocytes to cutaneous sites. Binds to CCR10.

**Cellular Location**

Secreted {ECO:0000250|UniProtKB:Q9Z1X0}.

**Tissue Location**

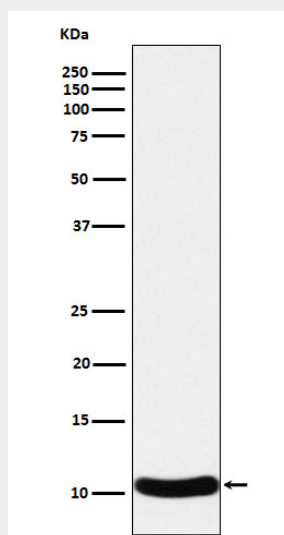
Testis, thymus, placenta, ovary and skin.

### Anti-CCL27 Rabbit Monoclonal Antibody - Protocols

Provided below are standard protocols that you may find useful for product applications.

- [Western Blot](#)
- [Blocking Peptides](#)
- [Dot Blot](#)
- [Immunohistochemistry](#)
- [Immunofluorescence](#)
- [Immunoprecipitation](#)
- [Flow Cytometry](#)
- [Cell Culture](#)

### Anti-CCL27 Rabbit Monoclonal Antibody - Images



Western blot analysis of CCL27 expression in Human CCL27 recombinant protein cell lysate.