

Anti-UBE2B Rabbit Monoclonal Antibody
Catalog # ABO16090

Specification

Anti-UBE2B Rabbit Monoclonal Antibody - Product Information

Application	WB, IHC, IF, ICC
Primary Accession	P63146
Host	Rabbit
Isotype	IgG
Reactivity	Human
Clonality	Monoclonal
Format	Liquid

Description

Anti-UBE2B Rabbit Monoclonal Antibody . Tested in WB, IHC, ICC/IF applications. This antibody reacts with Human.

Anti-UBE2B Rabbit Monoclonal Antibody - Additional Information

Gene ID 7320

Other Names

Ubiquitin-conjugating enzyme E2 B, 2.3.2.23, E2 ubiquitin-conjugating enzyme B, RAD6 homolog B, HR6B, hHR6B, Ubiquitin carrier protein B, Ubiquitin-conjugating enzyme E2-17 kDa, Ubiquitin-protein ligase B, UBE2B ([HGNC:12473](http://www.genenames.org/cgi-bin/gene_symbol_report?hgnc_id=12473))

Calculated MW

17 kDa KDa

Application Details

WB 1:500-1:2000
IHC 1:50-1:200
ICC/IF 1:50-1:200

Contents

Rabbit IgG in phosphate buffered saline, pH 7.4, 150mM NaCl, 0.02% sodium azide and 50% glycerol, 0.4-0.5mg/ml BSA.

Immunogen

A synthesized peptide derived from UBE2B

Purification

Affinity-chromatography

Storage

Store at -20°C for one year. For short term storage and frequent use, store at 4°C for up to one month. Avoid repeated freeze-thaw cycles.

Anti-UBE2B Rabbit Monoclonal Antibody - Protein Information

Name UBE2B ([HGNC:12473](#))**Function**

E2 ubiquitin-conjugating enzyme that accepts ubiquitin from the ubiquitin-activating enzyme E1 and transfers it to a E3 ubiquitin- protein ligase (PubMed:[16337599](http://www.uniprot.org/citations/16337599), PubMed:[17108083](http://www.uniprot.org/citations/17108083), PubMed:[17130289](http://www.uniprot.org/citations/17130289), PubMed:[1717990](http://www.uniprot.org/citations/1717990), PubMed:[20061386](http://www.uniprot.org/citations/20061386)). In vitro catalyzes 'Lys-11', as well as 'Lys-48'- and 'Lys-63'-linked polyubiquitination (PubMed:[20061386](http://www.uniprot.org/citations/20061386)). Together with the E3 enzyme BRE1 (RNF20 and/or RNF40), plays a role in transcription regulation by catalyzing the monoubiquitination of histone H2B at 'Lys-120' to form H2BK120ub1 (PubMed:[16337599](http://www.uniprot.org/citations/16337599)). H2BK120ub1 gives a specific tag for epigenetic transcriptional activation, elongation by RNA polymerase II, telomeric silencing, and is also a prerequisite for H3K4me and H3K79me formation (PubMed:[16337599](http://www.uniprot.org/citations/16337599)). May play a role in DNA repair (PubMed:[8062904](http://www.uniprot.org/citations/8062904)). Associates to the E3 ligase RAD18 to form the UBE2B-RAD18 ubiquitin ligase complex involved in mono-ubiquitination of DNA-associated PCNA on 'Lys-164' (PubMed:[17108083](http://www.uniprot.org/citations/17108083), PubMed:[17130289](http://www.uniprot.org/citations/17130289)). In association with the E3 enzyme UBR4, is involved in N-end rule-dependent protein degradation (PubMed:[38182926](http://www.uniprot.org/citations/38182926)). May be involved in neurite outgrowth (By similarity).

Cellular Location

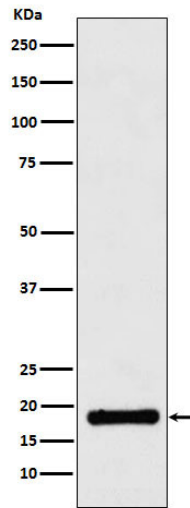
Cell membrane {ECO:0000250|UniProtKB:P63149}. Nucleus {ECO:0000250|UniProtKB:P63149}. Note=In peripheral neurons, expressed both at the plasma membrane and in nuclei {ECO:0000250|UniProtKB:P63149}

Anti-UBE2B Rabbit Monoclonal Antibody - Protocols

Provided below are standard protocols that you may find useful for product applications.

- [Western Blot](#)
- [Blocking Peptides](#)
- [Dot Blot](#)
- [Immunohistochemistry](#)
- [Immunofluorescence](#)
- [Immunoprecipitation](#)
- [Flow Cytometry](#)
- [Cell Culture](#)

Anti-UBE2B Rabbit Monoclonal Antibody - Images



Western blot analysis of UBE2B expression in Jurkat cell lysate.