

**Anti-MRPL28 Rabbit Monoclonal Antibody**  
Catalog # ABO16084**Specification****Anti-MRPL28 Rabbit Monoclonal Antibody - Product Information**

Application	WB, IF, ICC, IP, FC
Primary Accession	<a href="#">Q13084</a>
Host	Rabbit
Isotype	IgG
Reactivity	Rat, Human, Mouse
Clonality	Monoclonal
Format	Liquid

**Description**

Anti-MRPL28 Rabbit Monoclonal Antibody . Tested in WB, ICC/IF, IP, Flow Cytometry applications. This antibody reacts with Human, Mouse, Rat.

**Anti-MRPL28 Rabbit Monoclonal Antibody - Additional Information**

**Gene ID** 10573

**Other Names**

Large ribosomal subunit protein bL28m, 39S ribosomal protein L28, mitochondrial, L28mt, MRP-L28, Melanoma antigen p15, Melanoma-associated antigen recognized by T-lymphocytes, MRPL28, MAAT1

**Calculated MW**

30 kDa KDa

**Application Details**

WB 1:500-1:2000<br>ICC/IF 1:50-1:200<br>IP 1:50<br>FC 1:50

**Contents**

Rabbit IgG in phosphate buffered saline, pH 7.4, 150mM NaCl, 0.02% sodium azide and 50% glycerol, 0.4-0.5mg/ml BSA.

**Immunogen**

A synthesized peptide derived from MRPL28

**Purification**

Affinity-chromatography

**Storage**

**Store at -20°C for one year. For short term storage and frequent use, store at 4°C for up to one month. Avoid repeated freeze-thaw cycles.**

**Anti-MRPL28 Rabbit Monoclonal Antibody - Protein Information**

**Name** MRPL28

**Synonyms** MAAT1

**Cellular Location**  
Mitochondrion

**Tissue Location**

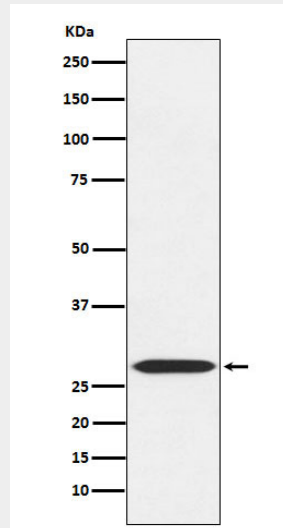
Found in a variety of normal tissues including spleen, testes, thymus, liver, kidney, brain, adrenal, lung and retinal tissue

### Anti-MRPL28 Rabbit Monoclonal Antibody - Protocols

Provided below are standard protocols that you may find useful for product applications.

- [Western Blot](#)
- [Blocking Peptides](#)
- [Dot Blot](#)
- [Immunohistochemistry](#)
- [Immunofluorescence](#)
- [Immunoprecipitation](#)
- [Flow Cytometry](#)
- [Cell Culture](#)

### Anti-MRPL28 Rabbit Monoclonal Antibody - Images



Western blot analysis of MRPL28 expression in 293 cell lysate.