

Anti-UBE4B Rabbit Monoclonal Antibody
Catalog # ABO16080**Specification****Anti-UBE4B Rabbit Monoclonal Antibody - Product Information**

Application	WB
Primary Accession	O95155
Host	Rabbit
Isotype	IgG
Reactivity	Rat, Human, Mouse
Clonality	Monoclonal
Format	Liquid

Description

Anti-UBE4B Rabbit Monoclonal Antibody . Tested in WB application. This antibody reacts with Human, Mouse, Rat.

Anti-UBE4B Rabbit Monoclonal Antibody - Additional Information

Gene ID 10277

Other Names

Ubiquitin conjugation factor E4 B, 2.3.2.27, UBE4B (http://www.genenames.org/cgi-bin/gene_symbol_report?hgnc_id=12500)
HGNC:12500

Calculated MW

130 kDa KDa

Application Details

WB 1:500-1:2000

Contents

Rabbit IgG in phosphate buffered saline, pH 7.4, 150mM NaCl, 0.02% sodium azide and 50% glycerol, 0.4-0.5mg/ml BSA.

Immunogen

A synthesized peptide derived from UBE4B

Purification

Affinity-chromatography

Storage

Store at -20°C for one year. For short term storage and frequent use, store at 4°C for up to one month. Avoid repeated freeze-thaw cycles.

Anti-UBE4B Rabbit Monoclonal Antibody - Protein Information

Name UBE4B ([HGNC:12500](#))

Function

Ubiquitin-protein ligase that probably functions as an E3 ligase in conjunction with specific E1 and E2 ligases (By similarity). May also function as an E4 ligase mediating the assembly of polyubiquitin chains on substrates ubiquitinated by another E3 ubiquitin ligase (By similarity). May regulate myosin assembly in striated muscles together with STUB1 and VCP/p97 by targeting myosin chaperone UNC45B for proteasomal degradation (PubMed:17369820).

Cellular Location

Cytoplasm. Nucleus {ECO:0000250|UniProtKB:Q9ES00}

Tissue Location

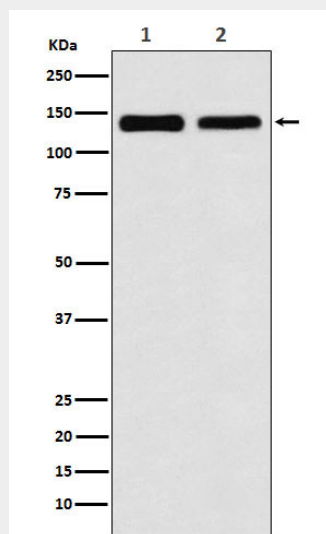
Expressed in differentiated myotubes (at protein level) (PubMed:17369820). Highest expression in ovary, testis, heart and skeletal muscle (PubMed:11802788). Expression is low in colon, thymus and peripheral blood leukocytes (PubMed:11802788). Almost undetectable in lung and spleen (PubMed:11802788)

Anti-UBE4B Rabbit Monoclonal Antibody - Protocols

Provided below are standard protocols that you may find useful for product applications.

- [Western Blot](#)
- [Blocking Peptides](#)
- [Dot Blot](#)
- [Immunohistochemistry](#)
- [Immunofluorescence](#)
- [Immunoprecipitation](#)
- [Flow Cytometry](#)
- [Cell Culture](#)

Anti-UBE4B Rabbit Monoclonal Antibody - Images



Western blot analysis of UBE4B expression in (1) 293T cell lysate; (2) NIH/3T3 cell lysate.