

**Anti-AHCY Rabbit Monoclonal Antibody**  
Catalog # ABO16063

**Specification**

---

**Anti-AHCY Rabbit Monoclonal Antibody - Product Information**

Application	WB
Primary Accession	<a href="#">P23526</a>
Host	Rabbit
Isotype	IgG
Reactivity	Rat, Human, Mouse
Clonality	Monoclonal
Format	Liquid

**Description**

Anti-AHCY Rabbit Monoclonal Antibody . Tested in WB application. This antibody reacts with Human, Mouse, Rat.

**Anti-AHCY Rabbit Monoclonal Antibody - Additional Information**

**Gene ID** 191

**Other Names**

Adenosylhomocysteinase, AdoHcyase, 3.13.2.1, S-adenosyl-L-homocysteine hydrolase, AHCY, SAHH

**Calculated MW**

48 kDa KDa

**Application Details**

WB 1:500-1:2000

**Contents**

Rabbit IgG in phosphate buffered saline, pH 7.4, 150mM NaCl, 0.02% sodium azide and 50% glycerol, 0.4-0.5mg/ml BSA.

**Immunogen**

A synthesized peptide derived from AHCY

**Purification**

Affinity-chromatography

Storage

**Store at -20°C for one year. For short term storage and frequent use, store at 4°C for up to one month. Avoid repeated freeze-thaw cycles.**

**Anti-AHCY Rabbit Monoclonal Antibody - Protein Information**

**Name** AHCY

## Synonyms SAHH

### Function

Catalyzes the hydrolysis of S-adenosyl-L-homocysteine to form adenosine and homocysteine (PubMed:<a href="http://www.uniprot.org/citations/10933798" target="\_blank">10933798</a>). Binds copper ions (By similarity).

### Cellular Location

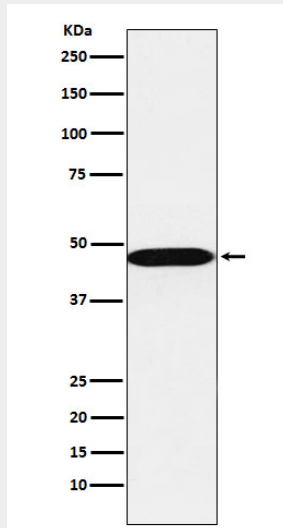
Cytoplasm. Melanosome. Nucleus. Endoplasmic reticulum. Note=Identified by mass spectrometry in melanosome fractions from stage I to stage IV

## Anti-AHCY Rabbit Monoclonal Antibody - Protocols

Provided below are standard protocols that you may find useful for product applications.

- [Western Blot](#)
- [Blocking Peptides](#)
- [Dot Blot](#)
- [Immunohistochemistry](#)
- [Immunofluorescence](#)
- [Immunoprecipitation](#)
- [Flow Cytometry](#)
- [Cell Culture](#)

## Anti-AHCY Rabbit Monoclonal Antibody - Images



Western blot analysis of AHCY expression in A549 cell lysate.