

**Anti-Caveolin-3 Rabbit Monoclonal Antibody**  
Catalog # ABO16060**Specification**

---

**Anti-Caveolin-3 Rabbit Monoclonal Antibody - Product Information**

Application	WB, IHC, IP
Primary Accession	<a href="#">P56539</a>
Host	Rabbit
Isotype	IgG
Reactivity	Human
Clonality	Monoclonal
Format	Liquid

**Description**

Anti-Caveolin-3 Rabbit Monoclonal Antibody . Tested in WB, IHC, IP applications. This antibody reacts with Human.

**Anti-Caveolin-3 Rabbit Monoclonal Antibody - Additional Information**

**Gene ID** 859

**Other Names**

Caveolin-3, M-caveolin, CAV3

**Calculated MW**

17 kDa KDa

**Application Details**

WB 1:500-1:2000<br>IHC 1:50-1:200<br>IP 1:50

**Contents**

Rabbit IgG in phosphate buffered saline, pH 7.4, 150mM NaCl, 0.02% sodium azide and 50% glycerol, 0.4-0.5mg/ml BSA.

**Immunogen**

A synthesized peptide derived from Caveolin-3

**Purification**

Affinity-chromatography

Storage

**Store at -20°C for one year. For short term storage and frequent use, store at 4°C for up to one month. Avoid repeated freeze-thaw cycles.**

**Anti-Caveolin-3 Rabbit Monoclonal Antibody - Protein Information**

**Name** CAV3

### Function

May act as a scaffolding protein within caveolar membranes. Interacts directly with G-protein alpha subunits and can functionally regulate their activity. May also regulate voltage-gated potassium channels. Plays a role in the sarcolemma repair mechanism of both skeletal muscle and cardiomyocytes that permits rapid resealing of membranes disrupted by mechanical stress (By similarity). Mediates the recruitment of CAVIN2 and CAVIN3 proteins to the caveolae (PubMed:<a href="http://www.uniprot.org/citations/19262564" target="\_blank">19262564</a>).

### Cellular Location

Golgi apparatus membrane; Peripheral membrane protein. Cell membrane {ECO:0000250|UniProtKB:P51638}; Peripheral membrane protein. Membrane, caveola {ECO:0000250|UniProtKB:P51637}; Peripheral membrane protein. Cell membrane, sarcolemma {ECO:0000250|UniProtKB:P51637}. Note=Potential hairpin-like structure in the membrane. Membrane protein of caveolae (By similarity)

### Tissue Location

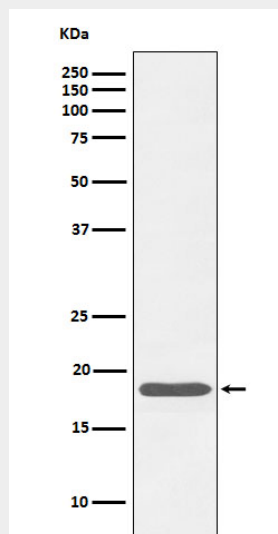
Expressed predominantly in muscle.

## Anti-Caveolin-3 Rabbit Monoclonal Antibody - Protocols

Provided below are standard protocols that you may find useful for product applications.

- [Western Blot](#)
- [Blocking Peptides](#)
- [Dot Blot](#)
- [Immunohistochemistry](#)
- [Immunofluorescence](#)
- [Immunoprecipitation](#)
- [Flow Cytometry](#)
- [Cell Culture](#)

## Anti-Caveolin-3 Rabbit Monoclonal Antibody - Images



Western blot analysis of Caveolin-3 expression in human skeletal muscle cell lysate.