

## Anti-RCHY1 Rabbit Monoclonal Antibody Catalog # ABO16056

### Specification

---

#### Anti-RCHY1 Rabbit Monoclonal Antibody - Product Information

Application	WB, IF, ICC, IP
Primary Accession	<a href="#">Q96PM5</a>
Host	Rabbit
Isotype	IgG
Reactivity	Human, Mouse
Clonality	Monoclonal
Format	Liquid

#### Description

Anti-RCHY1 Rabbit Monoclonal Antibody . Tested in WB, ICC/IF, IP applications. This antibody reacts with Human, Mouse.

#### Anti-RCHY1 Rabbit Monoclonal Antibody - Additional Information

**Gene ID** 25898

#### Other Names

RING finger and CHY zinc finger domain-containing protein 1, 2.3.2.27, Androgen receptor N-terminal-interacting protein, CH-rich-interacting match with PLAG1, E3 ubiquitin-protein ligase Pirh2, RING finger protein 199, RING-type E3 ubiquitin transferase RCHY1, Zinc finger protein 363, p53-induced RING-H2 protein, hPirh2, RCHY1

#### Calculated MW

30 kDa KDa

#### Application Details

WB 1:500-1:2000<br>ICC/IF 1:50-1:200<br>IP 1:50

#### Contents

Rabbit IgG in phosphate buffered saline, pH 7.4, 150mM NaCl, 0.02% sodium azide and 50% glycerol, 0.4-0.5mg/ml BSA.

#### Immunogen

A synthesized peptide derived from human RCHY1

#### Purification

Affinity-chromatography

#### Storage

**Store at -20°C for one year. For short term storage and frequent use, store at 4°C for up to one month. Avoid repeated freeze-thaw cycles.**

#### Anti-RCHY1 Rabbit Monoclonal Antibody - Protein Information

## Name RCHY1

### Function

E3 ubiquitin-protein ligase that mediates ubiquitination of target proteins, including p53/TP53, TP73, HDAC1 and CDKN1B (PubMed:[16914734](http://www.uniprot.org/citations/16914734)), PubMed:[17721809](http://www.uniprot.org/citations/17721809)), PubMed:[18006823](http://www.uniprot.org/citations/18006823)), PubMed:[19043414](http://www.uniprot.org/citations/19043414)), PubMed:[19483087](http://www.uniprot.org/citations/19483087)), PubMed:[21994467](http://www.uniprot.org/citations/21994467)). Mediates ubiquitination and degradation of p53/TP53; preferentially acts on tetrameric p53/TP53 (PubMed:[19043414](http://www.uniprot.org/citations/19043414)), PubMed:[19483087](http://www.uniprot.org/citations/19483087)). Catalyzes monoubiquitinates the translesion DNA polymerase POLH (PubMed:[21791603](http://www.uniprot.org/citations/21791603)). Involved in the ribosome-associated quality control (RQC) pathway, which mediates the extraction of incompletely synthesized nascent chains from stalled ribosomes: RCHY1 acts downstream of NEMF and recognizes CAT tails associated with stalled nascent chains, leading to their ubiquitination and degradation (PubMed:[33909987](http://www.uniprot.org/citations/33909987)).

### Cellular Location

Nucleus. Nucleus speckle. Cytoplasm

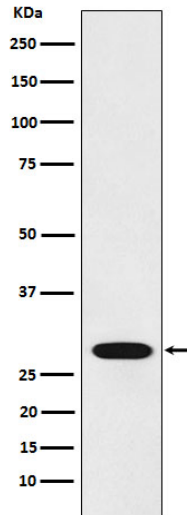
## Anti-RCHY1 Rabbit Monoclonal Antibody - Protocols

Provided below are standard protocols that you may find useful for product applications.

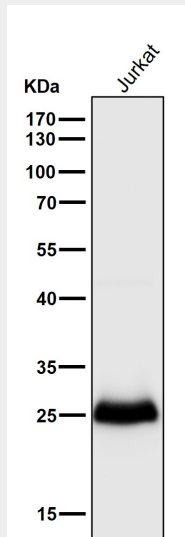
- [Western Blot](#)
- [Blocking Peptides](#)
- [Dot Blot](#)
- [Immunohistochemistry](#)
- [Immunofluorescence](#)
- [Immunoprecipitation](#)
- [Flow Cytometry](#)
- [Cell Culture](#)

## Anti-RCHY1 Rabbit Monoclonal Antibody - Images





Western blot analysis of RCHY1 expression in 293 cell lysate.



All lanes use the Antibody at 1:1k dilution for 1 hour at room temperature.