

Anti-Fetuin A Rabbit Monoclonal Antibody
Catalog # ABO16038**Specification**

Anti-Fetuin A Rabbit Monoclonal Antibody - Product Information

Application	WB, IP
Primary Accession	P02765
Host	Rabbit
Isotype	IgG
Reactivity	Human
Clonality	Monoclonal
Format	Liquid

Description

Anti-Fetuin A Rabbit Monoclonal Antibody . Tested in WB, IP applications. This antibody reacts with Human.

Anti-Fetuin A Rabbit Monoclonal Antibody - Additional Information

Gene ID 197

Other Names

Alpha-2-HS-glycoprotein, Alpha-2-Z-globulin, Ba-alpha-2-glycoprotein, Fetuin-A, Alpha-2-HS-glycoprotein chain A, Alpha-2-HS-glycoprotein chain B, AHSG, FETUA

Calculated MW

58 kDa KDa

Application Details

WB 1:500-1:2000
IP 1:50

Contents

Rabbit IgG in phosphate buffered saline, pH 7.4, 150mM NaCl, 0.02% sodium azide and 50% glycerol, 0.4-0.5mg/ml BSA.

Immunogen

A synthesized peptide derived from human Fetuin A

Purification

Affinity-chromatography

Storage

Store at -20°C for one year. For short term storage and frequent use, store at 4°C for up to one month. Avoid repeated freeze-thaw cycles.

Anti-Fetuin A Rabbit Monoclonal Antibody - Protein Information

Name AHSG

Synonyms FETUA

Function

Promotes endocytosis, possesses opsonic properties and influences the mineral phase of bone. Shows affinity for calcium and barium ions.

Cellular Location

Secreted.

Tissue Location

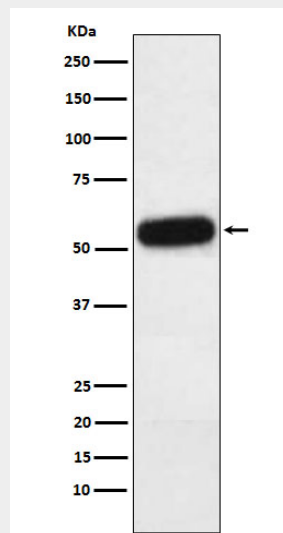
Synthesized in liver and selectively concentrated in bone matrix. Secreted in plasma. It is also found in dentin in much higher quantities than other plasma proteins

Anti-Fetuin A Rabbit Monoclonal Antibody - Protocols

Provided below are standard protocols that you may find useful for product applications.

- [Western Blot](#)
- [Blocking Peptides](#)
- [Dot Blot](#)
- [Immunohistochemistry](#)
- [Immunofluorescence](#)
- [Immunoprecipitation](#)
- [Flow Cytometry](#)
- [Cell Culture](#)

Anti-Fetuin A Rabbit Monoclonal Antibody - Images



Western blot analysis of Fetuin A expression in Human plasma lysate.