

Anti-NME2 Rabbit Monoclonal Antibody
Catalog # ABO16030

Specification

Anti-NME2 Rabbit Monoclonal Antibody - Product Information

Application	WB, IHC, IF, ICC, FC
Primary Accession	P22392
Host	Rabbit
Isotype	IgG
Reactivity	Rat, Human, Mouse
Clonality	Monoclonal
Format	Liquid

Description

Anti-NME2 Rabbit Monoclonal Antibody . Tested in WB, IHC, ICC/IF, Flow Cytometry applications.
This antibody reacts with Human, Mouse, Rat.

Anti-NME2 Rabbit Monoclonal Antibody - Additional Information

Gene ID 4831;654364

Other Names

Nucleoside diphosphate kinase B, NDK B, NDP kinase B, 2.7.4.6, C-myc purine-binding transcription factor PUF, Histidine protein kinase NDKB, 2.7.13.3, nm23-H2, NME2, NM23B

Calculated MW

17 kDa KDa

Application Details

WB 1:500-1:2000
IHC 1:50-1:200
ICC/IF 1:50-1:200
FC 1:50

Contents

Rabbit IgG in phosphate buffered saline, pH 7.4, 150mM NaCl, 0.02% sodium azide and 50% glycerol, 0.4-0.5mg/ml BSA.

Immunogen

A synthesized peptide derived from human NME2

Purification

Affinity-chromatography

Storage

Store at -20°C for one year. For short term storage and frequent use, store at 4°C for up to one month. Avoid repeated freeze-thaw cycles.

Anti-NME2 Rabbit Monoclonal Antibody - Protein Information

Name NME2

Synonyms NM23B

Function

Major role in the synthesis of nucleoside triphosphates other than ATP. The ATP gamma phosphate is transferred to the NDP beta phosphate via a ping-pong mechanism, using a phosphorylated active-site intermediate (By similarity). Negatively regulates Rho activity by interacting with AKAP13/LBC (PubMed:15249197). Acts as a transcriptional activator of the MYC gene; binds DNA non-specifically (PubMed:19435876, PubMed:8392752). Binds to both single-stranded guanine- and cytosine-rich strands within the nuclease hypersensitive element (NHE) III(1) region of the MYC gene promoter. Does not bind to duplex NHE III(1) (PubMed:19435876). Has G-quadruplex (G4) DNA-binding activity, which is independent of its nucleotide-binding and kinase activity. Binds both folded and unfolded G4 with similar low nanomolar affinities. Stabilizes folded G4s regardless of whether they are prefolded or not (PubMed:25679041). Exhibits histidine protein kinase activity (PubMed:20946858).

Cellular Location

Cytoplasm. Cell projection, lamellipodium. Cell projection, ruffle. Note=Colocalizes with ITGB1 and ITGB1BP1 at the edge or peripheral ruffles and lamellipodia during the early stages of cell spreading on fibronectin or collagen but not on vitronectin or laminin substrates [Isoform 3]: Cytoplasm. Cytoplasm, perinuclear region. Nucleus

Tissue Location

[Isoform 1]: Ubiquitously expressed.

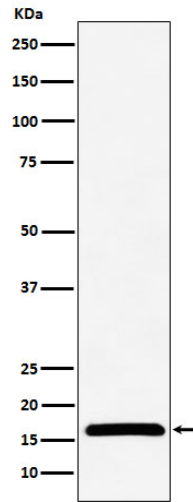
Anti-NME2 Rabbit Monoclonal Antibody - Protocols

Provided below are standard protocols that you may find useful for product applications.

- [Western Blot](#)
- [Blocking Peptides](#)
- [Dot Blot](#)
- [Immunohistochemistry](#)
- [Immunofluorescence](#)
- [Immunoprecipitation](#)
- [Flow Cytometry](#)
- [Cell Culture](#)

Anti-NME2 Rabbit Monoclonal Antibody - Images





Western blot analysis of NME2 expression in LnCaP cell lysate.