

Anti-COL11A1 Rabbit Monoclonal Antibody
Catalog # ABO16029

Specification

Anti-COL11A1 Rabbit Monoclonal Antibody - Product Information

Application	WB
Primary Accession	P12107
Host	Rabbit
Isotype	IgG
Reactivity	Human
Clonality	Monoclonal
Format	Liquid

Description

Anti-COL11A1 Rabbit Monoclonal Antibody . Tested in WB application. This antibody reacts with Human.

Anti-COL11A1 Rabbit Monoclonal Antibody - Additional Information

Gene ID 1301

Other Names

Collagen alpha-1(XI) chain, COL11A1, COLL6

Calculated MW

150 kDa KDa

Application Details

WB 1:500-1:2000

Contents

Rabbit IgG in phosphate buffered saline, pH 7.4, 150mM NaCl, 0.02% sodium azide and 50% glycerol, 0.4-0.5mg/ml BSA.

Immunogen

A synthesized peptide derived from human COL11A1

Purification

Affinity-chromatography

Storage

Store at -20°C for one year. For short term storage and frequent use, store at 4°C for up to one month. Avoid repeated freeze-thaw cycles.

Anti-COL11A1 Rabbit Monoclonal Antibody - Protein Information

Name COL11A1

Synonyms COLL6

Function

May play an important role in fibrillogenesis by controlling lateral growth of collagen II fibrils.

Cellular Location

Secreted, extracellular space, extracellular matrix {ECO:0000255|PROSITE-ProRule:PRU00793}

Tissue Location

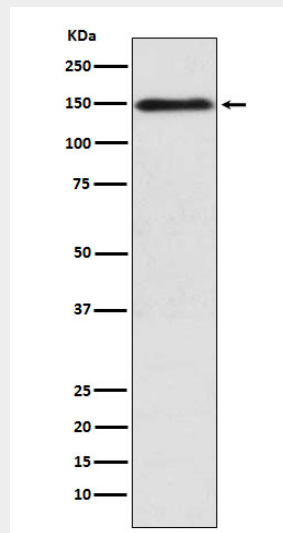
Cartilage, placenta and some tumor or virally transformed cell lines. Isoforms using exon IIA or IIB are found in the cartilage while isoforms using only exon IIB are found in the tendon

Anti-COL11A1 Rabbit Monoclonal Antibody - Protocols

Provided below are standard protocols that you may find useful for product applications.

- [Western Blot](#)
- [Blocking Peptides](#)
- [Dot Blot](#)
- [Immunohistochemistry](#)
- [Immunofluorescence](#)
- [Immunoprecipitation](#)
- [Flow Cytometry](#)
- [Cell Culture](#)

Anti-COL11A1 Rabbit Monoclonal Antibody - Images



Western blot analysis of COL11A1 expression in K562 cell lysate.