

Anti-KGF Rabbit Monoclonal Antibody Catalog # ABO16025

Specification

Anti-KGF Rabbit Monoclonal Antibody - Product Information

| | |
|-------------------|------------------------|
| Application | WB |
| Primary Accession | P21781 |
| Host | Rabbit |
| Isotype | IgG |
| Reactivity | Rat, Human, Mouse |
| Clonality | Monoclonal |
| Format | Liquid |

Description

Anti-KGF Rabbit Monoclonal Antibody . Tested in WB application. This antibody reacts with Human, Mouse, Rat.

Anti-KGF Rabbit Monoclonal Antibody - Additional Information

Gene ID 2252

Other Names

Fibroblast growth factor 7, FGF-7, Heparin-binding growth factor 7, HBGF-7, Keratinocyte growth factor, FGF7, KGF

Calculated MW

28 kDa KDa

Application Details

WB 1:500-1:2000

Contents

Rabbit IgG in phosphate buffered saline, pH 7.4, 150mM NaCl, 0.02% sodium azide and 50% glycerol, 0.4-0.5mg/ml BSA.

Immunogen

A synthesized peptide derived from human KGF

Purification

Affinity-chromatography

Storage

Store at -20°C for one year. For short term storage and frequent use, store at 4°C for up to one month. Avoid repeated freeze-thaw cycles.

Anti-KGF Rabbit Monoclonal Antibody - Protein Information

Name FGF7

Synonyms KGF

Function

Plays an important role in the regulation of embryonic development, cell proliferation and cell differentiation. Required for normal branching morphogenesis. Growth factor active on keratinocytes. Possible major paracrine effector of normal epithelial cell proliferation.

Cellular Location

Secreted.

Tissue Location

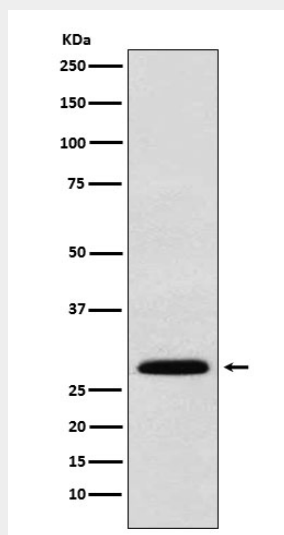
Epithelial cell.

Anti-KGF Rabbit Monoclonal Antibody - Protocols

Provided below are standard protocols that you may find useful for product applications.

- [Western Blot](#)
- [Blocking Peptides](#)
- [Dot Blot](#)
- [Immunohistochemistry](#)
- [Immunofluorescence](#)
- [Immunoprecipitation](#)
- [Flow Cytometry](#)
- [Cell Culture](#)

Anti-KGF Rabbit Monoclonal Antibody - Images



Western blot analysis of KGF expression in 293T cell lysate.