

Anti-LMO4 Rabbit Monoclonal Antibody
Catalog # ABO16023

Specification

Anti-LMO4 Rabbit Monoclonal Antibody - Product Information

Application	WB, IP
Primary Accession	P61968
Host	Rabbit
Isotype	IgG
Reactivity	Human, Mouse
Clonality	Monoclonal
Format	Liquid

Description

Anti-LMO4 Rabbit Monoclonal Antibody . Tested in WB, IP applications. This antibody reacts with Human, Mouse.

Anti-LMO4 Rabbit Monoclonal Antibody - Additional Information

Gene ID 8543

Other Names

LIM domain transcription factor LMO4, Breast tumor autoantigen, LIM domain only protein 4, LMO-4, LMO4

Calculated MW

18 kDa KDa

Application Details

WB 1:500-1:2000
IP 1:50

Contents

Rabbit IgG in phosphate buffered saline, pH 7.4, 150mM NaCl, 0.02% sodium azide and 50% glycerol, 0.4-0.5mg/ml BSA.

Immunogen

A synthesized peptide derived from human LMO4

Purification

Affinity-chromatography

Storage

Store at -20°C for one year. For short term storage and frequent use, store at 4°C for up to one month. Avoid repeated freeze-thaw cycles.

Anti-LMO4 Rabbit Monoclonal Antibody - Protein Information

Name LMO4

Function

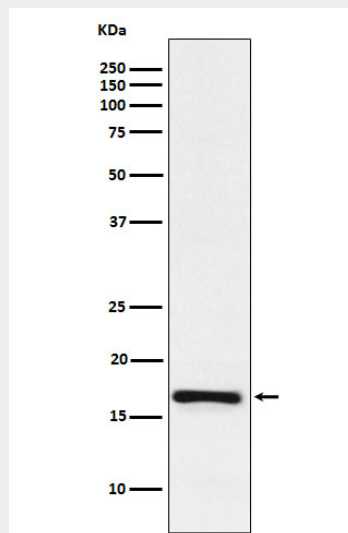
Transcription cofactor. Plays a role in establishing motor neuron identity, in concert with MNX1, acting, at least in part, to disrupt LDB1-LHX3 complexes thereby negatively modulating interneuron genes in motor neurons.

Anti-LMO4 Rabbit Monoclonal Antibody - Protocols

Provided below are standard protocols that you may find useful for product applications.

- [Western Blot](#)
- [Blocking Peptides](#)
- [Dot Blot](#)
- [Immunohistochemistry](#)
- [Immunofluorescence](#)
- [Immunoprecipitation](#)
- [Flow Cytometry](#)
- [Cell Culture](#)

Anti-LMO4 Rabbit Monoclonal Antibody - Images



Western blot analysis of LMO4 expression in Jurkat cell lysate.