

Anti-JAG2 Rabbit Monoclonal Antibody Catalog # ABO16019

Specification

Anti-JAG2 Rabbit Monoclonal Antibody - Product Information

Application	WB
Primary Accession	O9Y219
Host	Rabbit
Isotype	IgG
Reactivity	Human, Mouse
Clonality	Monoclonal
Format	Liquid

Description

Anti-JAG2 Rabbit Monoclonal Antibody . Tested in WB application. This antibody reacts with Human, Mouse.

Anti-JAG2 Rabbit Monoclonal Antibody - Additional Information

Gene ID 3714

Other Names

Protein jagged-2, Jagged2, hj2, JAG2

Calculated MW

145 kDa KDa

Application Details

WB 1:500-1:2000

Contents

Rabbit IgG in phosphate buffered saline, pH 7.4, 150mM NaCl, 0.02% sodium azide and 50% glycerol, 0.4-0.5mg/ml BSA.

Immunogen

A synthesized peptide derived from human JAG2

Purification

Affinity-chromatography

Storage

Store at -20°C for one year. For short term storage and frequent use, store at 4°C for up to one month. Avoid repeated freeze-thaw cycles.

Anti-JAG2 Rabbit Monoclonal Antibody - Protein Information

Name JAG2

Function

Putative Notch ligand involved in the mediation of Notch signaling. Involved in limb development (By similarity).

Cellular Location

Membrane; Single-pass type I membrane protein.

Tissue Location

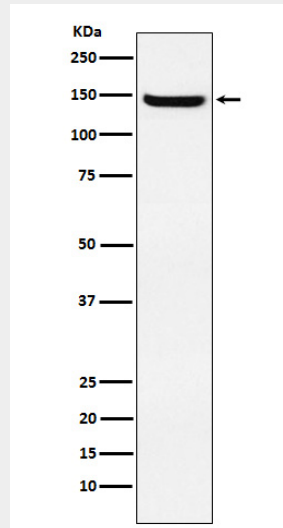
Expressed in heart, placenta and skeletal muscle and to a lesser extent in pancreas. Very low expression in brain, lung, liver and kidney

Anti-JAG2 Rabbit Monoclonal Antibody - Protocols

Provided below are standard protocols that you may find useful for product applications.

- [Western Blot](#)
- [Blocking Peptides](#)
- [Dot Blot](#)
- [Immunohistochemistry](#)
- [Immunofluorescence](#)
- [Immunoprecipitation](#)
- [Flow Cytometry](#)
- [Cell Culture](#)

Anti-JAG2 Rabbit Monoclonal Antibody - Images



Western blot analysis of JAG2 expression in HUVEC cell lysate.