

Anti-STF1 Rabbit Monoclonal Antibody Catalog # ABO16014

Specification

Anti-STF1 Rabbit Monoclonal Antibody - Product Information

Application	WB
Primary Accession	Q13285
Host	Rabbit
Isotype	IgG
Reactivity	Rat, Human, Mouse
Clonality	Monoclonal
Format	Liquid

Description

Anti-STF1 Rabbit Monoclonal Antibody . Tested in WB application. This antibody reacts with Human, Mouse, Rat.

Anti-STF1 Rabbit Monoclonal Antibody - Additional Information

Gene ID 2516

Other Names

Steroidogenic factor 1, SF-1, STF-1, hSF-1, Adrenal 4-binding protein, Fushi tarazu factor homolog 1, Nuclear receptor subfamily 5 group A member 1, Steroid hormone receptor Ad4BP, NR5A1, AD4BP, FTZF1, SF1

Calculated MW

52 kDa KDa

Application Details

WB 1:500-1:2000

Contents

Rabbit IgG in phosphate buffered saline, pH 7.4, 150mM NaCl, 0.02% sodium azide and 50% glycerol, 0.4-0.5mg/ml BSA.

Immunogen

A synthesized peptide derived from human STF1

Purification

Affinity-chromatography

Storage

Store at -20°C for one year. For short term storage and frequent use, store at 4°C for up to one month. Avoid repeated freeze-thaw cycles.

Anti-STF1 Rabbit Monoclonal Antibody - Protein Information

Name NR5A1

Synonyms AD4BP, FTZF1, SF1

Function

Transcriptional activator. Essential for sexual differentiation and formation of the primary steroidogenic tissues (PubMed: [27378692](http://www.uniprot.org/citations/27378692)). Binds to the Ad4 site found in the promoter region of steroidogenic P450 genes such as CYP11A, CYP11B and CYP21B. Also regulates the AMH/Muellerian inhibiting substance gene as well as the AHCH and STAR genes. 5'-YCAAGGYC-3' and 5'-RRAGGTCA-3' are the consensus sequences for the recognition by NR5A1 (PubMed: [27378692](http://www.uniprot.org/citations/27378692)). The SFPQ-NONO-NR5A1 complex binds to the CYP17 promoter and regulates basal and cAMP-dependent transcriptional activity. Binds phosphatidylcholine (By similarity). Binds phospholipids with a phosphatidylinositol (PI) headgroup, in particular PI(3,4)P2 and PI(3,4,5)P3. Activated by the phosphorylation of NR5A1 by HIPK3 leading to increased steroidogenic gene expression upon cAMP signaling pathway stimulation.

Cellular Location

Nucleus {ECO:0000255|PROSITE-ProRule:PRU00407, ECO:0000269|PubMed:11479297, ECO:0000269|PubMed:27490115}

Tissue Location

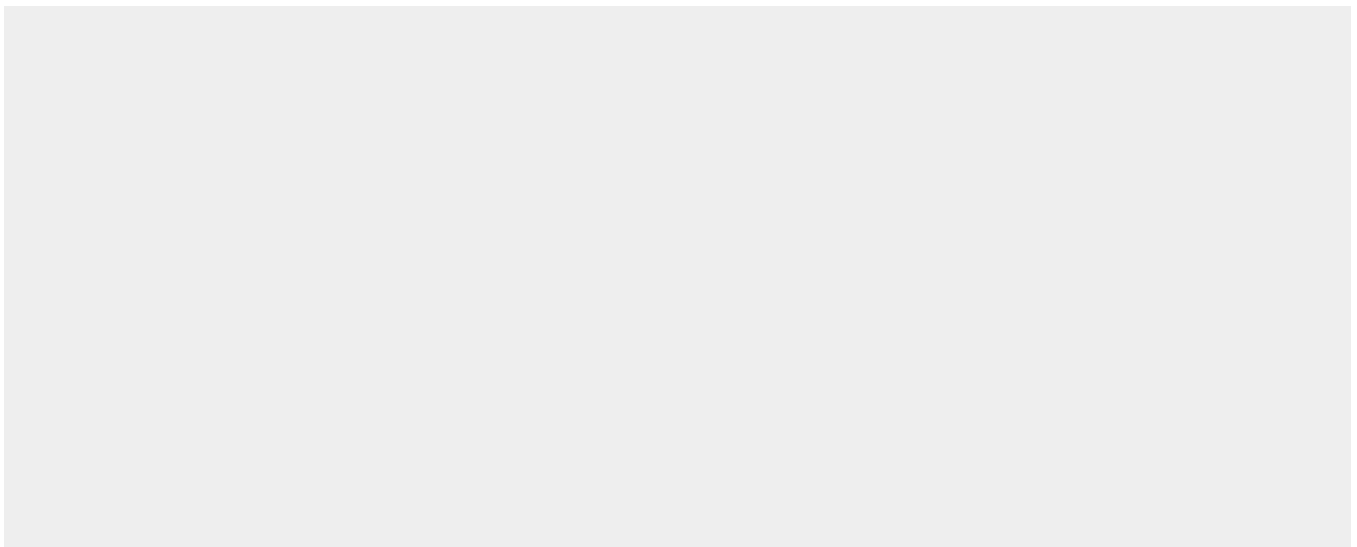
High expressed in the adrenal cortex, the ovary, the testis, and the spleen (PubMed:9177385)

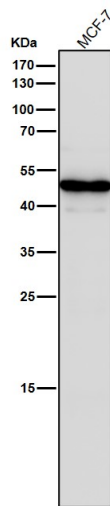
Anti-STF1 Rabbit Monoclonal Antibody - Protocols

Provided below are standard protocols that you may find useful for product applications.

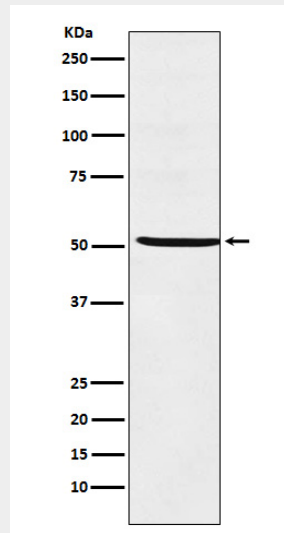
- [Western Blot](#)
- [Blocking Peptides](#)
- [Dot Blot](#)
- [Immunohistochemistry](#)
- [Immunofluorescence](#)
- [Immunoprecipitation](#)
- [Flow Cytometry](#)
- [Cell Culture](#)

Anti-STF1 Rabbit Monoclonal Antibody - Images





All lanes use the Antibody at 1:1W dilution for 1 hour at room temperature.



Western blot analysis of STF1 expression in Jutkat cell lysate.