

Anti-PCBP1 Rabbit Monoclonal Antibody
Catalog # ABO16011**Specification**

Anti-PCBP1 Rabbit Monoclonal Antibody - Product Information

Application	WB, IP
Primary Accession	Q15365
Host	Rabbit
Isotype	IgG
Reactivity	Rat, Human, Mouse
Clonality	Monoclonal
Format	Liquid

Description

Anti-PCBP1 Rabbit Monoclonal Antibody . Tested in WB, IP applications. This antibody reacts with Human, Mouse, Rat.

Anti-PCBP1 Rabbit Monoclonal Antibody - Additional Information

Gene ID 5093

Other Names

Poly(rC)-binding protein 1, Alpha-CP1, Heterogeneous nuclear ribonucleoprotein E1, hnRNP E1, Nucleic acid-binding protein SUB2.3, PCBP1 {ECO:0000303|PubMed:7607214, ECO:0000312|HGNC:HGNC:8647}

Calculated MW

40 kDa KDa

Application Details

WB 1:500-1:2000
IP 1:50

Contents

Rabbit IgG in phosphate buffered saline, pH 7.4, 150mM NaCl, 0.02% sodium azide and 50% glycerol, 0.4-0.5mg/ml BSA.

Immunogen

A synthesized peptide derived from human PCBP1

Purification

Affinity-chromatography

Storage

Store at -20°C for one year. For short term storage and frequent use, store at 4°C for up to one month. Avoid repeated freeze-thaw cycles.

Anti-PCBP1 Rabbit Monoclonal Antibody - Protein Information

Name PCBP1 {ECO:0000303|PubMed:7607214, ECO:0000312|HGNC:HGNC:8647}

Function

Single-stranded nucleic acid binding protein that binds preferentially to oligo dC (PubMed:15731341, PubMed:7556077, PubMed:7607214, PubMed:8152927). Together with PCBP2, required for erythropoiesis, possibly by regulating mRNA splicing (By similarity).

Cellular Location

Nucleus. Cytoplasm. Note=Loosely bound in the nucleus (PubMed:7607214). May shuttle between the nucleus and the cytoplasm (PubMed:7607214).

Tissue Location

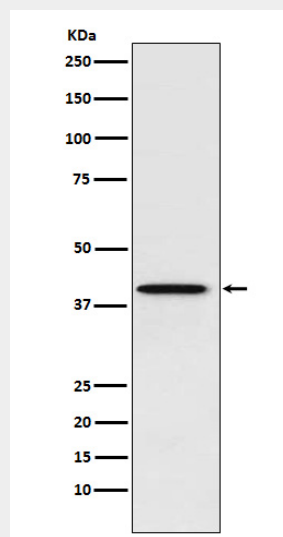
Abundantly expressed in skeletal muscle, thymus and peripheral blood leukocytes while a lower expression is observed in prostate, spleen, testis, ovary, small intestine, heart, liver, adrenal and thyroid glands.

Anti-PCBP1 Rabbit Monoclonal Antibody - Protocols

Provided below are standard protocols that you may find useful for product applications.

- [Western Blot](#)
- [Blocking Peptides](#)
- [Dot Blot](#)
- [Immunohistochemistry](#)
- [Immunofluorescence](#)
- [Immunoprecipitation](#)
- [Flow Cytometry](#)
- [Cell Culture](#)

Anti-PCBP1 Rabbit Monoclonal Antibody - Images



Western blot analysis of PCBP1 expression in HeLa cell lysate.