

Anti-ETV6 Rabbit Monoclonal Antibody Catalog # ABO16000

Specification

Anti-ETV6 Rabbit Monoclonal Antibody - Product Information

Application	WB, IF, ICC, FC
Primary Accession	P41212
Host	Rabbit
Isotype	IgG
Reactivity	Human
Clonality	Monoclonal
Format	Liquid

Description

Anti-ETV6 Rabbit Monoclonal Antibody . Tested in WB, ICC/IF, Flow Cytometry applications. This antibody reacts with Human.

Anti-ETV6 Rabbit Monoclonal Antibody - Additional Information

Gene ID 2120

Other Names

Transcription factor ETV6, ETS translocation variant 6, ETS-related protein Tel1, Tel, ETV6, TEL, TEL1

Calculated MW

53 kDa KDa

Application Details

WB 1:500-1:2000
ICC/IF 1:50-1:200
FC 1:50

Contents

Rabbit IgG in phosphate buffered saline, pH 7.4, 150mM NaCl, 0.02% sodium azide and 50% glycerol, 0.4-0.5mg/ml BSA.

Immunogen

A synthesized peptide derived from human ETV6

Purification

Affinity-chromatography

Storage

Store at -20°C for one year. For short term storage and frequent use, store at 4°C for up to one month. Avoid repeated freeze-thaw cycles.

Anti-ETV6 Rabbit Monoclonal Antibody - Protein Information

Name ETV6

Synonyms TEL, TEL1

Function

Transcriptional repressor; binds to the DNA sequence 5'- CCGGAAGT-3'. Plays a role in hematopoiesis and malignant transformation.

Cellular Location

Nucleus.

Tissue Location

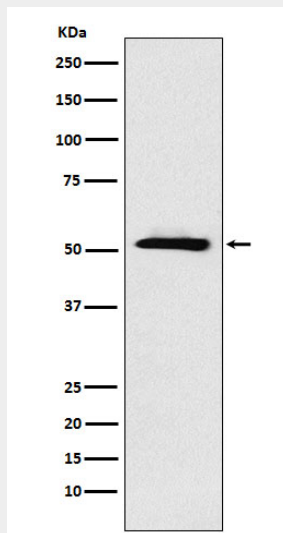
Ubiquitous.

Anti-ETV6 Rabbit Monoclonal Antibody - Protocols

Provided below are standard protocols that you may find useful for product applications.

- [Western Blot](#)
- [Blocking Peptides](#)
- [Dot Blot](#)
- [Immunohistochemistry](#)
- [Immunofluorescence](#)
- [Immunoprecipitation](#)
- [Flow Cytometry](#)
- [Cell Culture](#)

Anti-ETV6 Rabbit Monoclonal Antibody - Images



Western blot analysis of ETV6 expression in A431 cell lysate.