

Anti-ANPRB Rabbit Monoclonal Antibody
Catalog # ABO15998

Specification

Anti-ANPRB Rabbit Monoclonal Antibody - Product Information

Application	WB
Primary Accession	P20594
Host	Rabbit
Isotype	IgG
Reactivity	Rat, Human, Mouse
Clonality	Monoclonal
Format	Liquid

Description

Anti-ANPRB Rabbit Monoclonal Antibody . Tested in WB application. This antibody reacts with Human, Mouse, Rat.

Anti-ANPRB Rabbit Monoclonal Antibody - Additional Information

Gene ID 4882

Other Names

Atrial natriuretic peptide receptor 2, 4.6.1.2, Atrial natriuretic peptide receptor type B, ANP-B, ANPR-B, NPR-B, Guanylate cyclase B, GC-B, NPR2, ANPRB

Calculated MW

117 kDa KDa

Application Details

WB 1:500-1:2000

Contents

Rabbit IgG in phosphate buffered saline, pH 7.4, 150mM NaCl, 0.02% sodium azide and 50% glycerol, 0.4-0.5mg/ml BSA.

Immunogen

A synthesized peptide derived from human ANPRB

Purification

Affinity-chromatography

Storage

Store at -20°C for one year. For short term storage and frequent use, store at 4°C for up to one month. Avoid repeated freeze-thaw cycles.

Anti-ANPRB Rabbit Monoclonal Antibody - Protein Information

Name NPR2

Synonyms ANPRB

Function

Receptor for the C-type natriuretic peptide NPPC/CNP hormone. Has guanylate cyclase activity upon binding of its ligand. May play a role in the regulation of skeletal growth.

Cellular Location

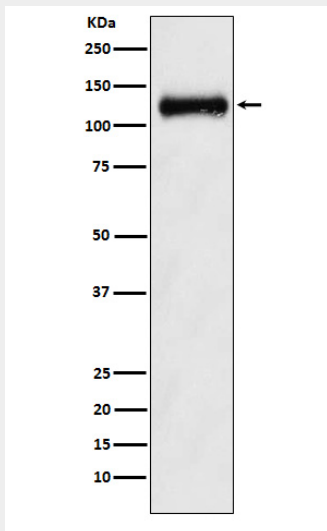
Cell membrane; Single-pass type I membrane protein

Anti-ANPRB Rabbit Monoclonal Antibody - Protocols

Provided below are standard protocols that you may find useful for product applications.

- [Western Blot](#)
- [Blocking Peptides](#)
- [Dot Blot](#)
- [Immunohistochemistry](#)
- [Immunofluorescence](#)
- [Immunoprecipitation](#)
- [Flow Cytometry](#)
- [Cell Culture](#)

Anti-ANPRB Rabbit Monoclonal Antibody - Images



Western blot analysis of ANPRB expression in Human fetal kidney lysate.