

## Anti-IL32 Rabbit Monoclonal Antibody Catalog # ABO15997

### Specification

---

#### Anti-IL32 Rabbit Monoclonal Antibody - Product Information

Application	WB
Primary Accession	<a href="#">P24001</a>
Host	Rabbit
Isotype	IgG
Reactivity	Human
Clonality	Monoclonal
Format	Liquid

#### Description

Anti-IL32 Rabbit Monoclonal Antibody . Tested in WB application. This antibody reacts with Human.

#### Anti-IL32 Rabbit Monoclonal Antibody - Additional Information

**Gene ID** 9235

#### Other Names

Interleukin-32, IL-32, Natural killer cells protein 4, Tumor necrosis factor alpha-inducing factor, IL32, NK4, TAIF

#### Calculated MW

23 kDa KDa

#### Application Details

WB 1:500-1:2000

#### Contents

Rabbit IgG in phosphate buffered saline, pH 7.4, 150mM NaCl, 0.02% sodium azide and 50% glycerol, 0.4-0.5mg/ml BSA.

#### Immunogen

A synthesized peptide derived from human IL32

#### Purification

Affinity-chromatography

Storage

**Store at -20°C for one year. For short term storage and frequent use, store at 4°C for up to one month. Avoid repeated freeze-thaw cycles.**

#### Anti-IL32 Rabbit Monoclonal Antibody - Protein Information

**Name** IL32

**Synonyms** NK4, TAIF**Function**

Cytokine that may play a role in innate and adaptive immune responses. It induces various cytokines such as TNFA/TNF-alpha and IL8. It activates typical cytokine signal pathways of NF-kappa-B and p38 MAPK.

**Cellular Location**

Secreted.

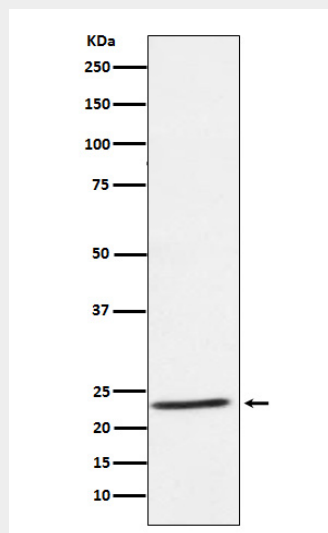
**Tissue Location**

Selectively expressed in lymphocytes. Expression is more prominent in immune cells than in non-immune cells

**Anti-IL32 Rabbit Monoclonal Antibody - Protocols**

Provided below are standard protocols that you may find useful for product applications.

- [Western Blot](#)
- [Blocking Peptides](#)
- [Dot Blot](#)
- [Immunohistochemistry](#)
- [Immunofluorescence](#)
- [Immunoprecipitation](#)
- [Flow Cytometry](#)
- [Cell Culture](#)

**Anti-IL32 Rabbit Monoclonal Antibody - Images**

Western blot analysis of IL32 expression in Human tonsil lysate.