

Anti-Kallikrein 5 Rabbit Monoclonal Antibody
Catalog # ABO15980**Specification****Anti-Kallikrein 5 Rabbit Monoclonal Antibody - Product Information**

Application	WB, IF, ICC, FC
Primary Accession	Q9Y337
Host	Rabbit
Isotype	IgG
Reactivity	Human, Mouse
Clonality	Monoclonal
Format	Liquid

Description

Anti-Kallikrein 5 Rabbit Monoclonal Antibody . Tested in WB, ICC/IF, Flow Cytometry applications. This antibody reacts with Human, Mouse.

Anti-Kallikrein 5 Rabbit Monoclonal Antibody - Additional Information

Gene ID 25818

Other Names

Kallikrein-5 {ECO:0000312|HGNC:HGNC:6366}, 3.4.21.-, Kallikrein-like protein 2, KLK-L2, Stratum corneum tryptic enzyme, KLK5 (http://www.genenames.org/cgi-bin/gene_symbol_report?hgnc_id=6366) HGNC:6366)

Calculated MW

37 kDa KDa

Application Details

WB 1:500-1:2000
ICC/IF 1:50-1:200
FC 1:50

Contents

Rabbit IgG in phosphate buffered saline, pH 7.4, 150mM NaCl, 0.02% sodium azide and 50% glycerol, 0.4-0.5mg/ml BSA.

Immunogen

A synthesized peptide derived from human Kallikrein 5

Purification

Affinity-chromatography

Storage

Store at -20°C for one year. For short term storage and frequent use, store at 4°C for up to one month. Avoid repeated freeze-thaw cycles.

Anti-Kallikrein 5 Rabbit Monoclonal Antibody - Protein Information

Name KLK5 ([HGNC:6366](#))

Function

May be involved in desquamation.

Cellular Location

Secreted.

Tissue Location

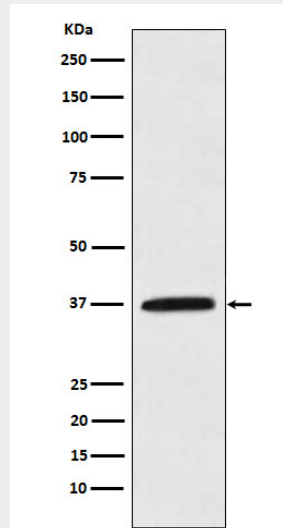
Expressed in skin, breast, brain and testis. Expressed at the stratum granulosum of palmar skin

Anti-Kallikrein 5 Rabbit Monoclonal Antibody - Protocols

Provided below are standard protocols that you may find useful for product applications.

- [Western Blot](#)
- [Blocking Peptides](#)
- [Dot Blot](#)
- [Immunohistochemistry](#)
- [Immunofluorescence](#)
- [Immunoprecipitation](#)
- [Flow Cytometry](#)
- [Cell Culture](#)

Anti-Kallikrein 5 Rabbit Monoclonal Antibody - Images



Western blot analysis of Kallikrein 5 expression in MCF-7 cell lysate.