

Anti-HMGCS2 Rabbit Monoclonal Antibody
Catalog # ABO15972**Specification**

Anti-HMGCS2 Rabbit Monoclonal Antibody - Product Information

Application	WB, IHC
Primary Accession	P54868
Host	Rabbit
Isotype	IgG
Reactivity	Rat, Human, Mouse
Clonality	Monoclonal
Format	Liquid

Description

Anti-HMGCS2 Rabbit Monoclonal Antibody . Tested in WB, IHC applications. This antibody reacts with Human, Mouse, Rat.

Anti-HMGCS2 Rabbit Monoclonal Antibody - Additional Information

Gene ID 3158

Other Names

Hydroxymethylglutaryl-CoA synthase, mitochondrial, HMG-CoA synthase, 2.3.3.10, 3-hydroxy-3-methylglutaryl coenzyme A synthase, HMGCS2

Calculated MW

50 kDa KDa

Application Details

WB 1:500-1:2000
IHC 1:50-1:200

Contents

Rabbit IgG in phosphate buffered saline, pH 7.4, 150mM NaCl, 0.02% sodium azide and 50% glycerol, 0.4-0.5mg/ml BSA.

Immunogen

A synthesized peptide derived from human HMGCS2

Purification

Affinity-chromatography

Storage

Store at -20°C for one year. For short term storage and frequent use, store at 4°C for up to one month. Avoid repeated freeze-thaw cycles.

Anti-HMGCS2 Rabbit Monoclonal Antibody - Protein Information

Name HMGCS2

Function

Catalyzes the first irreversible step in ketogenesis, condensing acetyl-CoA to acetoacetyl-CoA to form HMG-CoA, which is converted by HMG-CoA reductase (HMGCR) into mevalonate.

Cellular Location

Mitochondrion {ECO:0000250|UniProtKB:P22791}.

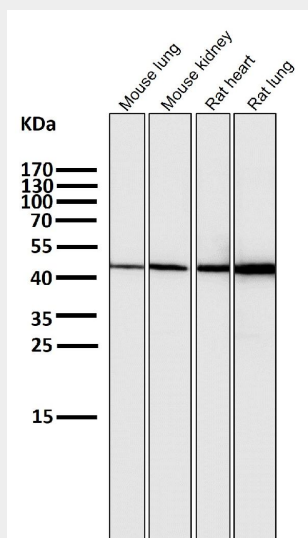
Tissue Location

Expression in liver is 200-fold higher than in any other tissue. Low expression in colon, kidney, testis, and pancreas Very low expression in heart and skeletal muscle (PubMed:16940161, PubMed:21952825, PubMed:7893153). Not detected in brain (PubMed:21952825).

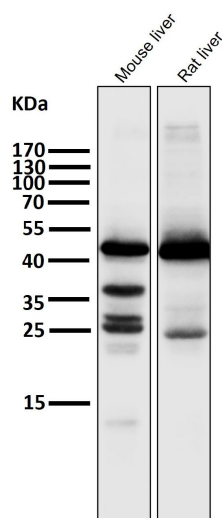
Anti-HMGCS2 Rabbit Monoclonal Antibody - Protocols

Provided below are standard protocols that you may find useful for product applications.

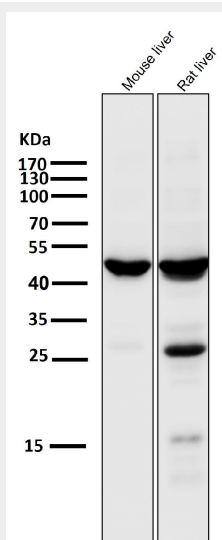
- [Western Blot](#)
- [Blocking Peptides](#)
- [Dot Blot](#)
- [Immunohistochemistry](#)
- [Immunofluorescence](#)
- [Immunoprecipitation](#)
- [Flow Cytometry](#)
- [Cell Culture](#)

Anti-HMGCS2 Rabbit Monoclonal Antibody - Images

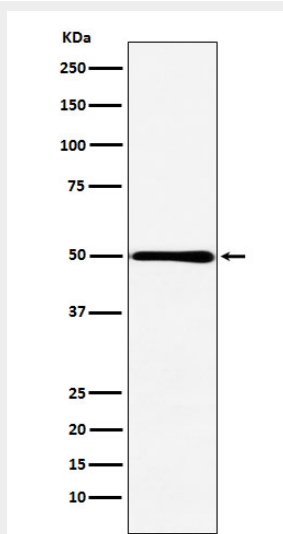
All lanes use the Antibody at 1:1K dilution for 1 hour at room temperature.



All lanes use the Antibody at 1:1K dilution for 1 hour at room temperature.



All lanes use the Antibody at 1:1W dilution for 1 hour at room temperature.



Western blot analysis of HMGCS2 expression in Caco-2 cell lysate.