

Anti-Alpha SNAP Rabbit Monoclonal Antibody Catalog # ABO15969

Specification

Anti-Alpha SNAP Rabbit Monoclonal Antibody - Product Information

Application	WB, IHC, IF, ICC
Primary Accession	P54920
Host	Rabbit
Isotype	IgG
Reactivity	Rat, Human, Mouse
Clonality	Monoclonal
Format	Liquid

Description

Anti-Alpha SNAP Rabbit Monoclonal Antibody . Tested in WB, IHC, ICC/IF applications. This antibody reacts with Human, Mouse, Rat.

Anti-Alpha SNAP Rabbit Monoclonal Antibody - Additional Information

Gene ID 8775

Other Names

Alpha-soluble NSF attachment protein, SNAP-alpha, N-ethylmaleimide-sensitive factor attachment protein alpha, NAPA, SNAPA

Calculated MW

33 kDa KDa

Application Details

WB 1:500-1:2000
IHC 1:50-1:200
ICC/IF 1:50-1:200

Contents

Rabbit IgG in phosphate buffered saline, pH 7.4, 150mM NaCl, 0.02% sodium azide and 50% glycerol, 0.4-0.5mg/ml BSA.

Immunogen

A synthesized peptide derived from human Alpha SNAP

Purification

Affinity-chromatography

Storage

Store at -20°C for one year. For short term storage and frequent use, store at 4°C for up to one month. Avoid repeated freeze-thaw cycles.

Anti-Alpha SNAP Rabbit Monoclonal Antibody - Protein Information

Name NAPA

Synonyms SNAPA

Function

Required for vesicular transport between the endoplasmic reticulum and the Golgi apparatus (Probable). Together with GNA12 promotes CDH5 localization to plasma membrane (PubMed:15980433).

Cellular Location

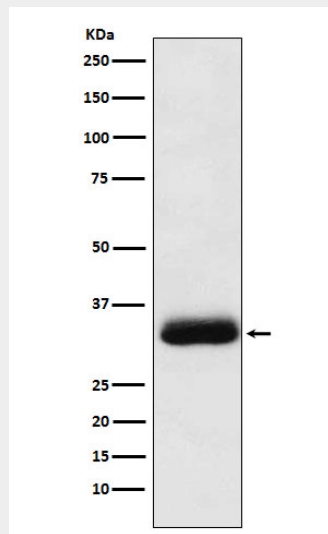
Cell membrane; Peripheral membrane protein

Anti-Alpha SNAP Rabbit Monoclonal Antibody - Protocols

Provided below are standard protocols that you may find useful for product applications.

- [Western Blot](#)
- [Blocking Peptides](#)
- [Dot Blot](#)
- [Immunohistochemistry](#)
- [Immunofluorescence](#)
- [Immunoprecipitation](#)
- [Flow Cytometry](#)
- [Cell Culture](#)

Anti-Alpha SNAP Rabbit Monoclonal Antibody - Images



Western blot analysis of Alpha SNAP expression in Molt4 cell lysate.