

**Anti-APLP2 Rabbit Monoclonal Antibody**  
Catalog # ABO15968**Specification**

---

**Anti-APLP2 Rabbit Monoclonal Antibody - Product Information**

Application	WB, IHC
Primary Accession	<a href="#">Q06481</a>
Host	Rabbit
Isotype	IgG
Reactivity	Rat, Human, Mouse
Clonality	Monoclonal
Format	Liquid

**Description**

Anti-APLP2 Rabbit Monoclonal Antibody . Tested in WB, IHC applications. This antibody reacts with Human, Mouse, Rat.

**Anti-APLP2 Rabbit Monoclonal Antibody - Additional Information**

**Gene ID** 334

**Other Names**

Amyloid beta precursor like protein 2 {ECO:0000312|HGNC:HGNC:598}, APPH, Amyloid beta (A4) precursor-like protein 2, APLP2 (<a href="http://www.genenames.org/cgi-bin/gene\_symbol\_report?hgnc\_id=598" target="\_blank">HGNC:598</a>)

**Calculated MW**

87-140 kDa KDa

**Application Details**

WB 1:1000-1:5000<br>IHC 1:50-1:200

**Contents**

Rabbit IgG in phosphate buffered saline, pH 7.4, 150mM NaCl, 0.02% sodium azide and 50% glycerol, 0.4-0.5mg/ml BSA.

**Immunogen**

A synthesized peptide derived from human APLP2

**Purification**

Affinity-chromatography

**Storage**

**Store at -20°C for one year. For short term storage and frequent use, store at 4°C for up to one month. Avoid repeated freeze-thaw cycles.**

**Anti-APLP2 Rabbit Monoclonal Antibody - Protein Information**

**Name** APLP2 ([HGNC:598](#))

**Function**

May play a role in the regulation of hemostasis. The soluble form may have inhibitory properties towards coagulation factors. May interact with cellular G-protein signaling pathways. May bind to the DNA 5'-GTCACATG-3'(CDEI box). Inhibits trypsin, chymotrypsin, plasmin, factor XIA and plasma and glandular kallikrein. Modulates the Cu/Zn nitric oxide-catalyzed autodegradation of GPC1 heparan sulfate side chains in fibroblasts (By similarity).

**Cellular Location**

Cell membrane; Single-pass type I membrane protein. Nucleus

**Tissue Location**

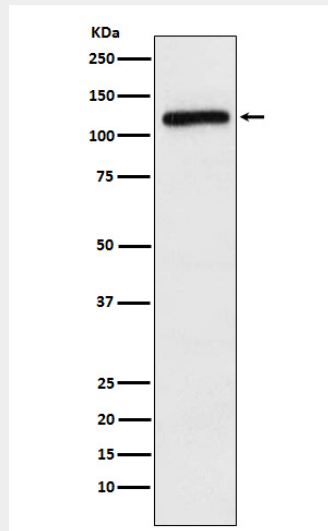
Expressed in placenta, brain, heart, lung, liver, kidney and endothelial tissues

**Anti-APLP2 Rabbit Monoclonal Antibody - Protocols**

Provided below are standard protocols that you may find useful for product applications.

- [Western Blot](#)
- [Blocking Peptides](#)
- [Dot Blot](#)
- [Immunohistochemistry](#)
- [Immunofluorescence](#)
- [Immunoprecipitation](#)
- [Flow Cytometry](#)
- [Cell Culture](#)

**Anti-APLP2 Rabbit Monoclonal Antibody - Images**



Western blot analysis of APLP2 expression in HeLa cell lysate.