

Anti-TROY Rabbit Monoclonal Antibody
Catalog # ABO15964

Specification

Anti-TROY Rabbit Monoclonal Antibody - Product Information

Application	WB, IHC, FC
Primary Accession	Q9NS68
Host	Rabbit
Isotype	IgG
Reactivity	Rat, Human, Mouse
Clonality	Monoclonal
Format	Liquid

Description

Anti-TROY Rabbit Monoclonal Antibody . Tested in WB, IHC, Flow Cytometry applications. This antibody reacts with Human, Mouse, Rat.

Anti-TROY Rabbit Monoclonal Antibody - Additional Information

Gene ID 55504

Other Names

Tumor necrosis factor receptor superfamily member 19, TRADE, Toxicity and JNK inducer, TNFRSF19, TAJ, TROY

Calculated MW

46 kDa KDa

Application Details

WB 1:500-1:2000
IHC 1:50-1:200
FC 1:50

Contents

Rabbit IgG in phosphate buffered saline, pH 7.4, 150mM NaCl, 0.02% sodium azide and 50% glycerol, 0.4-0.5mg/ml BSA.

Immunogen

A synthesized peptide derived from human TROY

Purification

Affinity-chromatography

Storage

Store at -20°C for one year. For short term storage and frequent use, store at 4°C for up to one month. Avoid repeated freeze-thaw cycles.

Anti-TROY Rabbit Monoclonal Antibody - Protein Information

Name TNFRSF19

Synonyms TAJ, TROY

Function

Can mediate activation of JNK and NF-kappa-B. May promote caspase-independent cell death.

Cellular Location

Membrane; Single-pass type I membrane protein

Tissue Location

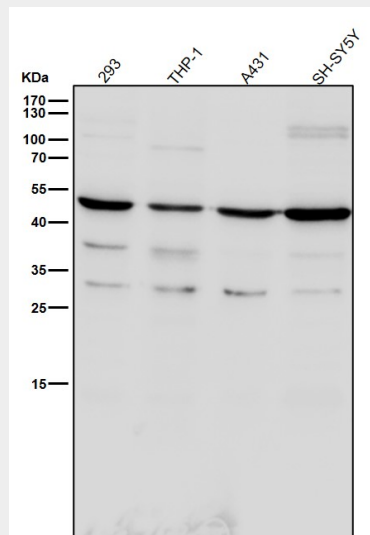
Highly expressed in prostate. Detected at lower levels in thymus, spleen, testis, uterus, small intestine, colon and peripheral blood leukocytes

Anti-TROY Rabbit Monoclonal Antibody - Protocols

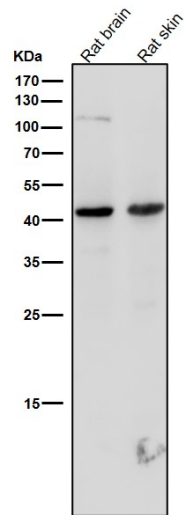
Provided below are standard protocols that you may find useful for product applications.

- [Western Blot](#)
- [Blocking Peptides](#)
- [Dot Blot](#)
- [Immunohistochemistry](#)
- [Immunofluorescence](#)
- [Immunoprecipitation](#)
- [Flow Cytometry](#)
- [Cell Culture](#)

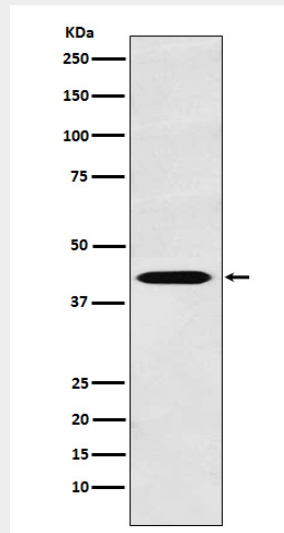
Anti-TROY Rabbit Monoclonal Antibody - Images



All lanes use the Antibody at 1:6K dilution for 1 hour at room temperature.



All lanes use the Antibody at 1:6K dilution for 1 hour at room temperature.



Western blot analysis of TROY expression in LnCaP cell lysate.