

Anti-KLC1 Rabbit Monoclonal Antibody Catalog # ABO15962

Specification

Anti-KLC1 Rabbit Monoclonal Antibody - Product Information

Application	WB, IHC, IF, ICC, IP, FC
Primary Accession	Q07866
Host	Rabbit
Isotype	IgG
Reactivity	Rat, Human, Mouse
Clonality	Monoclonal
Format	Liquid

Description

Anti-KLC1 Rabbit Monoclonal Antibody . Tested in WB, IHC, ICC/IF, IP, Flow Cytometry applications. This antibody reacts with Human, Mouse, Rat.

Anti-KLC1 Rabbit Monoclonal Antibody - Additional Information

Gene ID 3831

Other Names

Kinesin light chain 1, KLC 1, KLC1, KLC, KNS2

Calculated MW

65 kDa, 75 kDa KDa

Application Details

WB 1:500-1:2000
IHC 1:50-1:200
ICC/IF 1:50-1:200
IP 1:50
FC 1:50

Contents

Rabbit IgG in phosphate buffered saline, pH 7.4, 150mM NaCl, 0.02% sodium azide and 50% glycerol, 0.4-0.5mg/ml BSA.

Immunogen

A synthesized peptide derived from human KLC1

Purification

Affinity-chromatography

Storage

Store at -20°C for one year. For short term storage and frequent use, store at 4°C for up to one month. Avoid repeated freeze-thaw cycles.

Anti-KLC1 Rabbit Monoclonal Antibody - Protein Information

Name KLC1

Synonyms KLC, KNS2

Function

Kinesin is a microtubule-associated force-producing protein that may play a role in organelle transport (PubMed: [21385839](http://www.uniprot.org/citations/21385839)). The light chain may function in coupling of cargo to the heavy chain or in the modulation of its ATPase activity (By similarity).

Cellular Location

Cell projection, growth cone {ECO:0000250|UniProtKB:P37285}. Cytoplasmic vesicle. Cytoplasm, cytoskeleton

Tissue Location

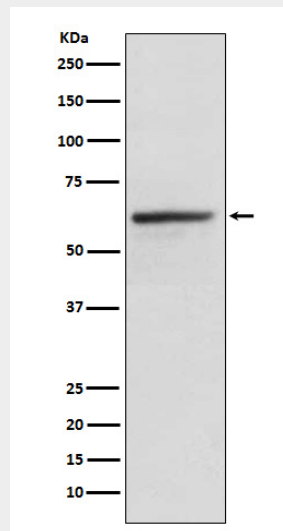
Found in a variety of tissues. Mostly abundant in brain and spine.

Anti-KLC1 Rabbit Monoclonal Antibody - Protocols

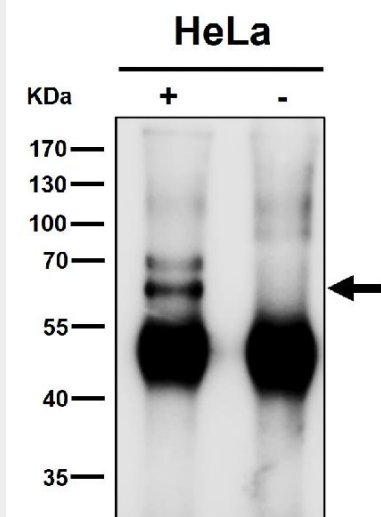
Provided below are standard protocols that you may find useful for product applications.

- [Western Blot](#)
- [Blocking Peptides](#)
- [Dot Blot](#)
- [Immunohistochemistry](#)
- [Immunofluorescence](#)
- [Immunoprecipitation](#)
- [Flow Cytometry](#)
- [Cell Culture](#)

Anti-KLC1 Rabbit Monoclonal Antibody - Images



Western blot analysis of KLC1 expression in HeLa cell lysate.



Immunoprecipitate (IP) analysis using the Antibody at 1:50 dilution. (wb at 1:3K dilution)