

**Anti-GUSB Rabbit Monoclonal Antibody**  
Catalog # ABO15956**Specification****Anti-GUSB Rabbit Monoclonal Antibody - Product Information**

Application	WB, IHC, IF, ICC, FC
Primary Accession	<a href="#">P08236</a>
Host	Rabbit
Isotype	IgG
Reactivity	Human
Clonality	Monoclonal
Format	Liquid

**Description**

Anti-GUSB Rabbit Monoclonal Antibody . Tested in WB, IHC, ICC/IF, Flow Cytometry applications.  
This antibody reacts with Human.

**Anti-GUSB Rabbit Monoclonal Antibody - Additional Information**

**Gene ID** 2990

**Other Names**

Beta-glucuronidase, 3.2.1.31, Beta-G1, GUSB

**Calculated MW**

75 kDa KDa

**Application Details**

WB 1:500-1:2000<br>IHC 1:50-1:200<br>ICC/IF 1:50-1:200<br>FC 1:50

**Contents**

Rabbit IgG in phosphate buffered saline, pH 7.4, 150mM NaCl, 0.02% sodium azide and 50% glycerol, 0.4-0.5mg/ml BSA.

**Immunogen**

A synthesized peptide derived from human GUSB

**Purification**

Affinity-chromatography

Storage

**Store at -20°C for one year. For short term storage and frequent use, store at 4°C for up to one month. Avoid repeated freeze-thaw cycles.**

**Anti-GUSB Rabbit Monoclonal Antibody - Protein Information**

**Name** GUSB

**Function**

Plays an important role in the degradation of dermatan and keratan sulfates.

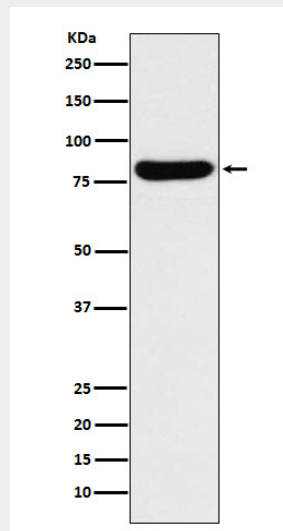
**Cellular Location**

Lysosome.

**Anti-GUSB Rabbit Monoclonal Antibody - Protocols**

Provided below are standard protocols that you may find useful for product applications.

- [Western Blot](#)
- [Blocking Peptides](#)
- [Dot Blot](#)
- [Immunohistochemistry](#)
- [Immunofluorescence](#)
- [Immunoprecipitation](#)
- [Flow Cytometry](#)
- [Cell Culture](#)

**Anti-GUSB Rabbit Monoclonal Antibody - Images**

Western blot analysis of GUSB expression in K562 cell lysate.