

Anti-Phospho-IKB alpha (S36) Rabbit Monoclonal Antibody Catalog # ABO15954

Specification

Anti-Phospho-IKB alpha (S36) Rabbit Monoclonal Antibody - Product Information

Application	WB, FC
Primary Accession	P25963
Host	Rabbit
Isotype	IgG
Reactivity	Human, Mouse
Clonality	Monoclonal
Format	Liquid

Description

Anti-Phospho-IKB alpha (S36) Rabbit Monoclonal Antibody . Tested in WB, Flow Cytometry applications. This antibody reacts with Human, Mouse.

Anti-Phospho-IKB alpha (S36) Rabbit Monoclonal Antibody - Additional Information

Gene ID 4792

Other Names

NF-kappa-B inhibitor alpha, I-kappa-B-alpha, Ikb-alpha, IkappaBalpha, Major histocompatibility complex enhancer-binding protein MAD3, NFKBIA, IKBA, MAD3, NFKBI

Calculated MW

39 kDa KDa

Application Details

WB 1:500-1:2000
FC 1:50

Contents

Rabbit IgG in phosphate buffered saline, pH 7.4, 150mM NaCl, 0.02% sodium azide and 50% glycerol, 0.4-0.5mg/ml BSA.

Immunogen

A synthesized peptide derived from human Phospho-IKB alpha (S36)

Purification

Affinity-chromatography

Storage

Store at -20°C for one year. For short term storage and frequent use, store at 4°C for up to one month. Avoid repeated freeze-thaw cycles.

Anti-Phospho-IKB alpha (S36) Rabbit Monoclonal Antibody - Protein Information

Name NFKBIA

Synonyms IKBA, MAD3, NFKBI**Function**

Inhibits the activity of dimeric NF-kappa-B/REL complexes by trapping REL (RELA/p65 and NFKB1/p50) dimers in the cytoplasm by masking their nuclear localization signals (PubMed:1493333, PubMed:36651806, PubMed:7479976). On cellular stimulation by immune and pro-inflammatory responses, becomes phosphorylated promoting ubiquitination and degradation, enabling the dimeric RELA to translocate to the nucleus and activate transcription (PubMed:7479976, PubMed:7628694, PubMed:7796813, PubMed:7878466).

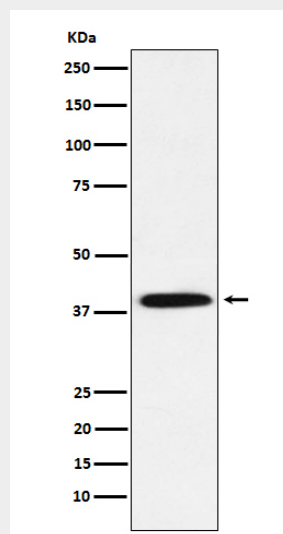
Cellular Location

Cytoplasm. Nucleus. Note=Shuttles between the nucleus and the cytoplasm by a nuclear localization signal (NLS) and a CRM1-dependent nuclear export.

Anti-Phospho-IKB alpha (S36) Rabbit Monoclonal Antibody - Protocols

Provided below are standard protocols that you may find useful for product applications.

- [Western Blot](#)
- [Blocking Peptides](#)
- [Dot Blot](#)
- [Immunohistochemistry](#)
- [Immunofluorescence](#)
- [Immunoprecipitation](#)
- [Flow Cytometry](#)
- [Cell Culture](#)

Anti-Phospho-IKB alpha (S36) Rabbit Monoclonal Antibody - Images

Western blot analysis of Phospho-IKB alpha (S36) expression in HeLa cell lysate treated with Calyculin A.

