

Anti-DOCK2 Rabbit Monoclonal Antibody
Catalog # ABO15936

Specification

Anti-DOCK2 Rabbit Monoclonal Antibody - Product Information

Application	WB, IHC
Primary Accession	Q92608
Host	Rabbit
Isotype	IgG
Reactivity	Human
Clonality	Monoclonal
Format	Liquid

Description

Anti-DOCK2 Rabbit Monoclonal Antibody . Tested in WB, IHC applications. This antibody reacts with Human.

Anti-DOCK2 Rabbit Monoclonal Antibody - Additional Information

Gene ID 1794

Other Names

Dedicator of cytokinesis protein 2, DOCK2, KIAA0209

Calculated MW

212 kDa KDa

Application Details

WB 1:500-1:2000
IHC 1:50-1:200

Contents

Rabbit IgG in phosphate buffered saline, pH 7.4, 150mM NaCl, 0.02% sodium azide and 50% glycerol, 0.4-0.5mg/ml BSA.

Immunogen

A synthesized peptide derived from human DOCK2

Purification

Affinity-chromatography

Storage

Store at -20°C for one year. For short term storage and frequent use, store at 4°C for up to one month. Avoid repeated freeze-thaw cycles.

Anti-DOCK2 Rabbit Monoclonal Antibody - Protein Information

Name DOCK2

Synonyms KIAA0209

Function

Involved in cytoskeletal rearrangements required for lymphocyte migration in response of chemokines. Activates RAC1 and RAC2, but not CDC42, by functioning as a guanine nucleotide exchange factor (GEF), which exchanges bound GDP for free GTP. May also participate in IL2 transcriptional activation via the activation of RAC2.

Cellular Location

Endomembrane system; Peripheral membrane protein. Cytoplasm, cytoskeleton. Note=Colocalizes with F-actin

Tissue Location

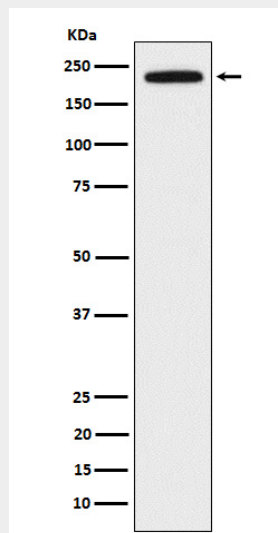
Specifically expressed in hematopoietic cells. Highly expressed in peripheral blood leukocytes, and expressed at intermediate level in thymus and spleen. Expressed at very low level in the small intestine and colon.

Anti-DOCK2 Rabbit Monoclonal Antibody - Protocols

Provided below are standard protocols that you may find useful for product applications.

- [Western Blot](#)
- [Blocking Peptides](#)
- [Dot Blot](#)
- [Immunohistochemistry](#)
- [Immunofluorescence](#)
- [Immunoprecipitation](#)
- [Flow Cytometry](#)
- [Cell Culture](#)

Anti-DOCK2 Rabbit Monoclonal Antibody - Images



Western blot analysis of DOCK2 expression in Jurkat cell lysate.