

Anti-ESRRG Rabbit Monoclonal Antibody
Catalog # ABO15928

Specification

Anti-ESRRG Rabbit Monoclonal Antibody - Product Information

Application	WB
Primary Accession	P62508
Host	Rabbit
Isotype	IgG
Reactivity	Rat, Human, Mouse
Clonality	Monoclonal
Format	Liquid

Description

Anti-ESRRG Rabbit Monoclonal Antibody . Tested in WB application. This antibody reacts with Human, Mouse, Rat.

Anti-ESRRG Rabbit Monoclonal Antibody - Additional Information

Gene ID 2104

Other Names

Estrogen-related receptor gamma, ERR gamma-2, Estrogen receptor-related protein 3, Nuclear receptor subfamily 3 group B member 3, ESRRG, ERR3, ERRG2, KIAA0832, NR3B3

Calculated MW

51 kDa KDa

Application Details

WB 1:500-1:2000

Contents

Rabbit IgG in phosphate buffered saline, pH 7.4, 150mM NaCl, 0.02% sodium azide and 50% glycerol, 0.4-0.5mg/ml BSA.

Immunogen

A synthesized peptide derived from human ESRRG

Purification

Affinity-chromatography

Storage

Store at -20°C for one year. For short term storage and frequent use, store at 4°C for up to one month. Avoid repeated freeze-thaw cycles.

Anti-ESRRG Rabbit Monoclonal Antibody - Protein Information

Name ESRRG

Synonyms ERR3, ERRG2, KIAA0832, NR3B3

Function

Orphan receptor that acts as a transcription activator in the absence of bound ligand. Binds specifically to an estrogen response element and activates reporter genes controlled by estrogen response elements (By similarity). Induces the expression of PERM1 in the skeletal muscle.

Cellular Location

Nucleus.

Tissue Location

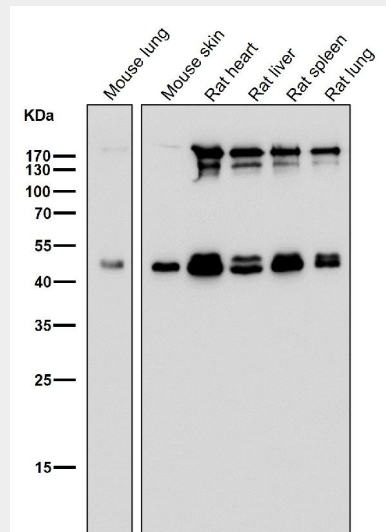
Expressed in the heart, kidney, brain, lung, bone marrow, adrenal gland, trachea, spinal cord and thyroid gland

Anti-ESRRG Rabbit Monoclonal Antibody - Protocols

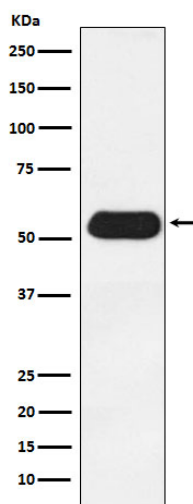
Provided below are standard protocols that you may find useful for product applications.

- [Western Blot](#)
- [Blocking Peptides](#)
- [Dot Blot](#)
- [Immunohistochemistry](#)
- [Immunofluorescence](#)
- [Immunoprecipitation](#)
- [Flow Cytometry](#)
- [Cell Culture](#)

Anti-ESRRG Rabbit Monoclonal Antibody - Images



All lanes use the Antibody at 1:1K dilution for 1 hour at room temperature.



Western blot analysis of Estrogen Related Receptor gamma expression in Human fetal heart lysate.