

**Anti-Inhibin beta A Rabbit Monoclonal Antibody**  
**Catalog # ABO15914****Specification**

---

**Anti-Inhibin beta A Rabbit Monoclonal Antibody - Product Information**

Application	WB
Primary Accession	<a href="#">P08476</a>
Host	Rabbit
Isotype	IgG
Reactivity	Rat, Human, Mouse
Clonality	Monoclonal
Format	Liquid

**Description**

Anti-Inhibin beta A Rabbit Monoclonal Antibody . Tested in WB application. This antibody reacts with Human, Mouse, Rat.

**Anti-Inhibin beta A Rabbit Monoclonal Antibody - Additional Information**

**Gene ID** 3624

**Other Names**

Inhibin beta A chain, Activin beta-A chain, Erythroid differentiation protein, EDF, INHBA

**Calculated MW**

43 kDa KDa

**Application Details**

WB 1:500-1:2000

**Contents**

Rabbit IgG in phosphate buffered saline, pH 7.4, 150mM NaCl, 0.02% sodium azide and 50% glycerol, 0.4-0.5mg/ml BSA.

**Immunogen**

A synthesized peptide derived from human Inhibin beta A

**Purification**

Affinity-chromatography

Storage

**Store at -20°C for one year. For short term storage and frequent use, store at 4°C for up to one month. Avoid repeated freeze-thaw cycles.**

**Anti-Inhibin beta A Rabbit Monoclonal Antibody - Protein Information**

**Name** INHBA

**Function**

Inhibins and activins inhibit and activate, respectively, the secretion of follitropin by the pituitary gland. Inhibins/activins are involved in regulating a number of diverse functions such as hypothalamic and pituitary hormone secretion, gonadal hormone secretion, germ cell development and maturation, erythroid differentiation, insulin secretion, nerve cell survival, embryonic axial development or bone growth, depending on their subunit composition. Inhibins appear to oppose the functions of activins.

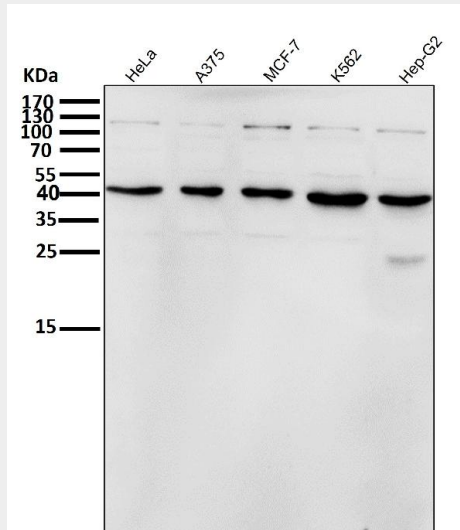
**Cellular Location**

Secreted.

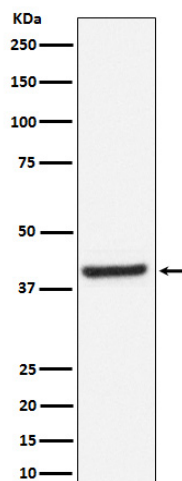
**Anti-Inhibin beta A Rabbit Monoclonal Antibody - Protocols**

Provided below are standard protocols that you may find useful for product applications.

- [Western Blot](#)
- [Blocking Peptides](#)
- [Dot Blot](#)
- [Immunohistochemistry](#)
- [Immunofluorescence](#)
- [Immunoprecipitation](#)
- [Flow Cytometry](#)
- [Cell Culture](#)

**Anti-Inhibin beta A Rabbit Monoclonal Antibody - Images**

All lanes use the Antibody at 1:8K dilution for 1 hour at room temperature.



Western blot analysis of Inhibin beta A expression in Human fetal brain lysate.