

Anti-SEN2 Rabbit Monoclonal Antibody Catalog # ABO15900

Specification

Anti-SEN2 Rabbit Monoclonal Antibody - Product Information

Application	WB, IHC, IF, ICC
Primary Accession	Q9HC62
Host	Rabbit
Isotype	IgG
Reactivity	Human
Clonality	Monoclonal
Format	Liquid

Description

Anti-SEN2 Rabbit Monoclonal Antibody . Tested in WB, IHC, ICC/IF applications. This antibody reacts with Human.

Anti-SEN2 Rabbit Monoclonal Antibody - Additional Information

Gene ID 59343

Other Names

Sentrin-specific protease 2, 3.4.22.-, Axam2, SENP2 {ECO:0000303|PubMed:10718198, ECO:0000312|HGNC:HGNC:23116}

Calculated MW

68 kDa KDa

Application Details

WB 1:500-1:2000
IHC 1:50-1:200
ICC/IF 1:50-1:200

Contents

Rabbit IgG in phosphate buffered saline, pH 7.4, 150mM NaCl, 0.02% sodium azide and 50% glycerol, 0.4-0.5mg/ml BSA.

Immunogen

A synthesized peptide derived from human SENP2

Purification

Affinity-chromatography

Storage

Store at -20°C for one year. For short term storage and frequent use, store at 4°C for up to one month. Avoid repeated freeze-thaw cycles.

Anti-SEN2 Rabbit Monoclonal Antibody - Protein Information

Name SENP2 {ECO:0000303|PubMed:10718198, ECO:0000312|HGNC:HGNC:23116}

Function

Protease that catalyzes two essential functions in the SUMO pathway (PubMed:11896061, PubMed:12192048, PubMed:15296745, PubMed:20194620, PubMed:21965678). The first is the hydrolysis of an alpha-linked peptide bond at the C-terminal end of the small ubiquitin- like modifier (SUMO) propeptides, SUMO1, SUMO2 and SUMO3 leading to the mature form of the proteins (PubMed:15296745). The second is the deconjugation of SUMO1, SUMO2 and SUMO3 from targeted proteins, by cleaving an epsilon-linked peptide bond between the C-terminal glycine of the mature SUMO and the lysine epsilon-amino group of the target protein (PubMed:15296745, PubMed:20194620, PubMed:21965678). May down-regulate CTNNB1 levels and thereby modulate the Wnt pathway (By similarity). Deconjugates SUMO2 from MTA1 (PubMed:21965678). Plays a dynamic role in adipogenesis by desumoylating and promoting the stabilization of CEBPB (PubMed:20194620). Acts as a regulator of the cGAS-STING pathway by catalyzing desumoylation of CGAS and STING1 during the late phase of viral infection (By similarity).

Cellular Location

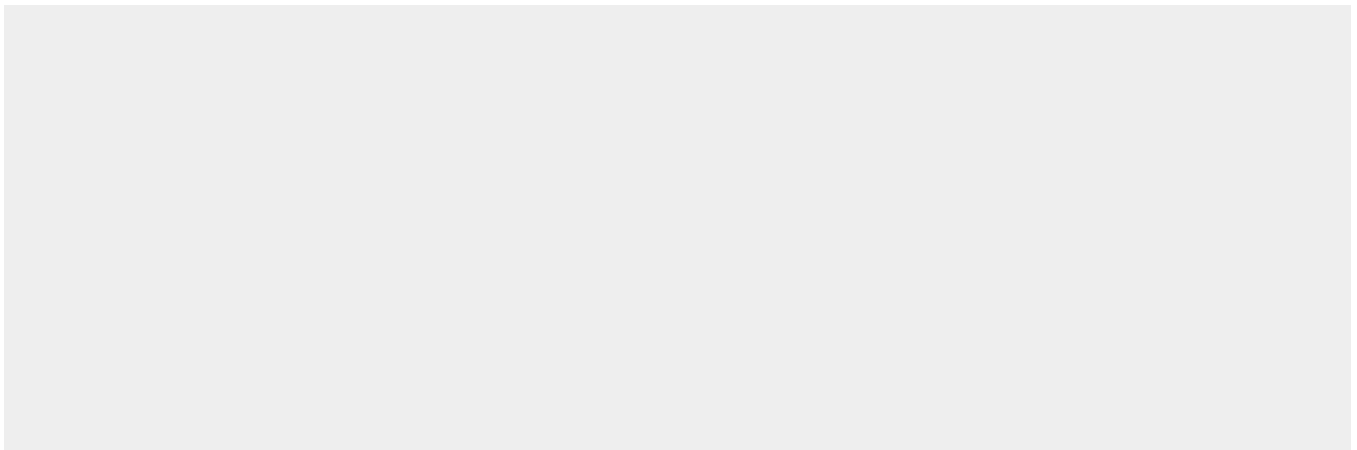
Nucleus, nuclear pore complex. Nucleus membrane; Peripheral membrane protein; Nucleoplasmic side. Cytoplasm Note=Shuttles between cytoplasm and nucleus

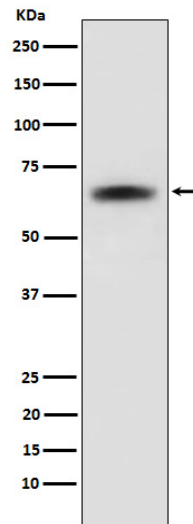
Anti-SENP2 Rabbit Monoclonal Antibody - Protocols

Provided below are standard protocols that you may find useful for product applications.

- [Western Blot](#)
- [Blocking Peptides](#)
- [Dot Blot](#)
- [Immunohistochemistry](#)
- [Immunofluorescence](#)
- [Immunoprecipitation](#)
- [Flow Cytometry](#)
- [Cell Culture](#)

Anti-SENP2 Rabbit Monoclonal Antibody - Images





Western blot analysis of SENP2 expression in 293T cell lysate.