

Anti-Cystatin A Rabbit Monoclonal Antibody
Catalog # ABO15893**Specification**

Anti-Cystatin A Rabbit Monoclonal Antibody - Product Information

Application	WB, FC
Primary Accession	P01040
Host	Rabbit
Isotype	IgG
Reactivity	Rat, Human, Mouse
Clonality	Monoclonal
Format	Liquid

Description

Anti-Cystatin A Rabbit Monoclonal Antibody . Tested in WB, Flow Cytometry applications. This antibody reacts with Human, Mouse, Rat.

Anti-Cystatin A Rabbit Monoclonal Antibody - Additional Information

Gene ID 1475

Other Names

Cystatin-A, Cystatin-AS, Stefin-A, Cystatin-A, N-terminally processed, CSTA, STF1, STFA

Calculated MW

13 kDa KDa

Application Details

WB 1:500-1:2000
FC 1:50

Contents

Rabbit IgG in phosphate buffered saline, pH 7.4, 150mM NaCl, 0.02% sodium azide and 50% glycerol, 0.4-0.5mg/ml BSA.

Immunogen

A synthesized peptide derived from human Cystatin A

Purification

Affinity-chromatography

Storage

Store at -20°C for one year. For short term storage and frequent use, store at 4°C for up to one month. Avoid repeated freeze-thaw cycles.

Anti-Cystatin A Rabbit Monoclonal Antibody - Protein Information

Name CSTA

Synonyms STF1, STFA

Function

This is an intracellular thiol proteinase inhibitor. Has an important role in desmosome-mediated cell-cell adhesion in the lower levels of the epidermis.

Cellular Location

Cytoplasm.

Tissue Location

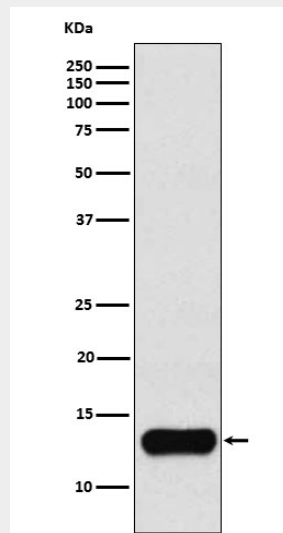
Expressed in the skin throughout the epidermis.

Anti-Cystatin A Rabbit Monoclonal Antibody - Protocols

Provided below are standard protocols that you may find useful for product applications.

- [Western Blot](#)
- [Blocking Peptides](#)
- [Dot Blot](#)
- [Immunohistochemistry](#)
- [Immunofluorescence](#)
- [Immunoprecipitation](#)
- [Flow Cytometry](#)
- [Cell Culture](#)

Anti-Cystatin A Rabbit Monoclonal Antibody - Images



Western blot analysis of Cystatin A expression in K562 cell lysate.