

## Anti-IL12 p40 Rabbit Monoclonal Antibody Catalog # ABO15890

### Specification

---

#### Anti-IL12 p40 Rabbit Monoclonal Antibody - Product Information

Application	WB
Primary Accession	<a href="#">P29460</a>
Host	Rabbit
Isotype	IgG
Reactivity	Human
Clonality	Monoclonal
Format	Liquid

#### Description

Anti-IL12 p40 Rabbit Monoclonal Antibody . Tested in WB application. This antibody reacts with Human.

#### Anti-IL12 p40 Rabbit Monoclonal Antibody - Additional Information

Gene ID 3593

#### Other Names

Interleukin-12 subunit beta, IL-12B, Cytotoxic lymphocyte maturation factor 40 kDa subunit, CLMF p40, IL-12 subunit p40, NK cell stimulatory factor chain 2, NKSF2, IL12B, NKSF2

#### Calculated MW

40 kDa KDa

#### Application Details

WB 1:500-1:2000

#### Contents

Rabbit IgG in phosphate buffered saline, pH 7.4, 150mM NaCl, 0.02% sodium azide and 50% glycerol, 0.4-0.5mg/ml BSA.

#### Immunogen

A synthesized peptide derived from human IL12 p40

#### Purification

Affinity-chromatography

#### Storage

Store at -20°C for one year. For short term storage and frequent use, store at 4°C for up to one month. Avoid repeated freeze-thaw cycles.

#### Anti-IL12 p40 Rabbit Monoclonal Antibody - Protein Information

Name IL12B

**Synonyms** NKSF2**Function**

Cytokine that can act as a growth factor for activated T and NK cells, enhance the lytic activity of NK/lymphokine-activated killer cells, and stimulate the production of IFN-gamma by resting PBMC.

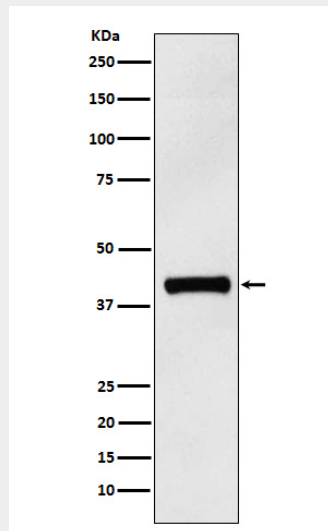
**Cellular Location**

Secreted.

**Anti-IL12 p40 Rabbit Monoclonal Antibody - Protocols**

Provided below are standard protocols that you may find useful for product applications.

- [Western Blot](#)
- [Blocking Peptides](#)
- [Dot Blot](#)
- [Immunohistochemistry](#)
- [Immunofluorescence](#)
- [Immunoprecipitation](#)
- [Flow Cytometry](#)
- [Cell Culture](#)

**Anti-IL12 p40 Rabbit Monoclonal Antibody - Images**

Western blot analysis of IL12 p40 expression in Human IL12 p40 recombinant protein.