

Anti-Hippocalcin Rabbit Monoclonal Antibody
Catalog # ABO15889**Specification****Anti-Hippocalcin Rabbit Monoclonal Antibody - Product Information**

Application	WB
Primary Accession	P84074
Host	Rabbit
Isotype	IgG
Reactivity	Rat, Human, Mouse
Clonality	Monoclonal
Format	Liquid

Description

Anti-Hippocalcin Rabbit Monoclonal Antibody . Tested in WB application. This antibody reacts with Human, Mouse, Rat.

Anti-Hippocalcin Rabbit Monoclonal Antibody - Additional Information

Gene ID 3208

Other Names

Neuron-specific calcium-binding protein hippocalcin, Calcium-binding protein BDR-2, HPCA (http://www.genenames.org/cgi-bin/gene_symbol_report?hgnc_id=5144)>HGNC:5144), BDR2

Calculated MW

26 kDa KDa

Application Details

WB 1:500-1:2000

Contents

Rabbit IgG in phosphate buffered saline, pH 7.4, 150mM NaCl, 0.02% sodium azide and 50% glycerol, 0.4-0.5mg/ml BSA.

Immunogen

A synthesized peptide derived from human Hippocalcin

Purification

Affinity-chromatography

Storage

Store at -20°C for one year. For short term storage and frequent use, store at 4°C for up to one month. Avoid repeated freeze-thaw cycles.

Anti-Hippocalcin Rabbit Monoclonal Antibody - Protein Information

Name HPCA ([HGNC:5144](#))

Synonyms BDR2

Function

Calcium-binding protein that may play a role in the regulation of voltage-dependent calcium channels (PubMed:28398555). May also play a role in cyclic-nucleotide-mediated signaling through the regulation of adenylate and guanylate cyclases (By similarity).

Cellular Location

Cytoplasm, cytosol {ECO:0000250|UniProtKB:P84076, ECO:0000269|PubMed:28398555}.
Membrane {ECO:0000250|UniProtKB:P84076}; Peripheral membrane protein {ECO:0000250|UniProtKB:P84076} Note=Association with membranes is calcium-dependent (By similarity) Enriched in the perinuclear region, probably at the trans Golgi network in response to calcium (PubMed:28398555) {ECO:0000250|UniProtKB:P84076, ECO:0000269|PubMed:28398555}

Tissue Location

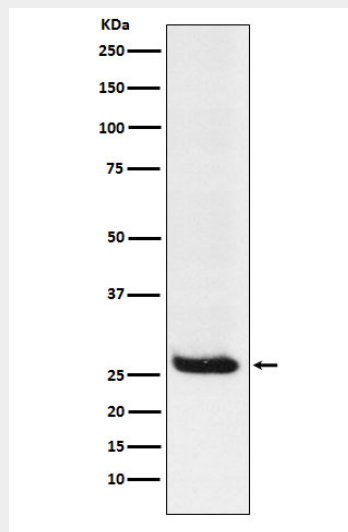
Brain specific..

Anti-Hippocalcin Rabbit Monoclonal Antibody - Protocols

Provided below are standard protocols that you may find useful for product applications.

- [Western Blot](#)
- [Blocking Peptides](#)
- [Dot Blot](#)
- [Immunohistochemistry](#)
- [Immunofluorescence](#)
- [Immunoprecipitation](#)
- [Flow Cytometry](#)
- [Cell Culture](#)

Anti-Hippocalcin Rabbit Monoclonal Antibody - Images



Western blot analysis of Hippocalcin expression in Neuro2a cell lysate.