

**Anti-BGAT Rabbit Monoclonal Antibody**  
Catalog # ABO15884

**Specification**

**Anti-BGAT Rabbit Monoclonal Antibody - Product Information**

Application	WB, IP
Primary Accession	<a href="#">P16442</a>
Host	Rabbit
Isotype	IgG
Reactivity	Rat, Human, Mouse
Clonality	Monoclonal
Format	Liquid

**Description**

Anti-BGAT Rabbit Monoclonal Antibody . Tested in WB, IP applications. This antibody reacts with Human, Mouse, Rat.

**Anti-BGAT Rabbit Monoclonal Antibody - Additional Information**

**Gene ID 28**

**Other Names**

Histo-blood group ABO system transferase, Fucosylglycoprotein 3-alpha-galactosyltransferase, Fucosylglycoprotein alpha-N-acetylgalactosaminyltransferase, Glycoprotein-fucosylgalactoside alpha-N-acetylgalactosaminyltransferase, 2.4.1.40, Glycoprotein-fucosylgalactoside alpha-galactosyltransferase, 2.4.1.37, Histo-blood group A transferase, A transferase, Histo-blood group B transferase, B transferase, NAGAT, Fucosylglycoprotein alpha-N-acetylgalactosaminyltransferase soluble form, ABO

**Calculated MW**

41 kDa KDa

**Application Details**

WB 1:500-1:2000<br>IP 1:50

**Contents**

Rabbit IgG in phosphate buffered saline, pH 7.4, 150mM NaCl, 0.02% sodium azide and 50% glycerol, 0.4-0.5mg/ml BSA.

**Immunogen**

A synthesized peptide derived from human BGAT

**Purification**

Affinity-chromatography

**Storage**

**Store at -20°C for one year. For short term storage and frequent use, store at 4°C for up to one month. Avoid repeated freeze-thaw cycles.**

## Anti-BGAT Rabbit Monoclonal Antibody - Protein Information

**Name** ABO

### Function

This protein is the basis of the ABO blood group system. The histo-blood group ABO involves three carbohydrate antigens: A, B, and H. A, B, and AB individuals express a glycosyltransferase activity that converts the H antigen to the A antigen (by addition of UDP-GalNAc) or to the B antigen (by addition of UDP-Gal), whereas O individuals lack such activity.

### Cellular Location

Golgi apparatus, Golgi stack membrane; Single-pass type II membrane protein. Secreted  
Note=Membrane-bound form in trans cisternae of Golgi. Secreted into the body fluid

### Tissue Location

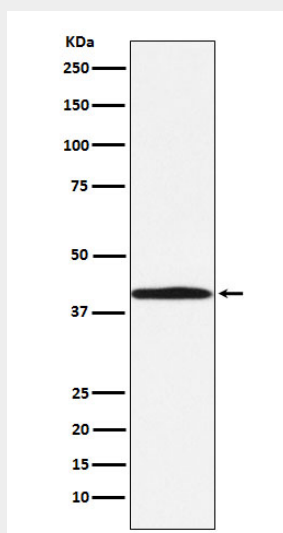
Expressed at high levels in testis. Also expressed in pancreas, uterus and lung and salivary gland

## Anti-BGAT Rabbit Monoclonal Antibody - Protocols

Provided below are standard protocols that you may find useful for product applications.

- [Western Blot](#)
- [Blocking Peptides](#)
- [Dot Blot](#)
- [Immunohistochemistry](#)
- [Immunofluorescence](#)
- [Immunoprecipitation](#)
- [Flow Cytometry](#)
- [Cell Culture](#)

## Anti-BGAT Rabbit Monoclonal Antibody - Images



Western blot analysis of BGAT expression in 293T cell lysate.