

Anti-UBE2C Rabbit Monoclonal Antibody
Catalog # ABO15881**Specification****Anti-UBE2C Rabbit Monoclonal Antibody - Product Information**

Application	WB
Primary Accession	O00762
Host	Rabbit
Isotype	IgG
Reactivity	Human
Clonality	Monoclonal
Format	Liquid

Description

Anti-UBE2C Rabbit Monoclonal Antibody . Tested in WB application. This antibody reacts with Human.

Anti-UBE2C Rabbit Monoclonal Antibody - Additional Information

Gene ID 11065

Other Names

Ubiquitin-conjugating enzyme E2 C, 2.3.2.23, (E3-independent) E2 ubiquitin-conjugating enzyme C, 2.3.2.24, E2 ubiquitin-conjugating enzyme C, UbcH10, Ubiquitin carrier protein C, Ubiquitin-protein ligase C, UBE2C, UBCH10

Calculated MW

20 kDa KDa

Application Details

WB 1:500-1:2000

Contents

Rabbit IgG in phosphate buffered saline, pH 7.4, 150mM NaCl, 0.02% sodium azide and 50% glycerol, 0.4-0.5mg/ml BSA.

Immunogen

A synthesized peptide derived from human UBE2C

Purification

Affinity-chromatography

Storage

Store at -20°C for one year. For short term storage and frequent use, store at 4°C for up to one month. Avoid repeated freeze-thaw cycles.

Anti-UBE2C Rabbit Monoclonal Antibody - Protein Information

Name UBE2C

Synonyms UBCH10

Function

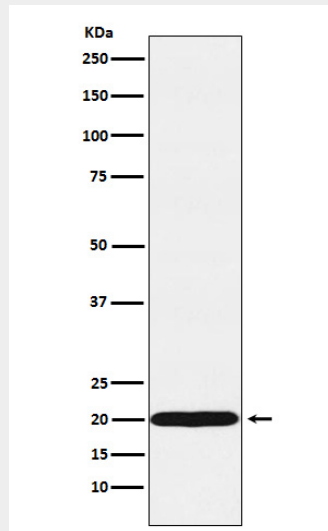
Accepts ubiquitin from the E1 complex and catalyzes its covalent attachment to other proteins. In vitro catalyzes 'Lys-11'- and 'Lys-48'-linked polyubiquitination. Acts as an essential factor of the anaphase promoting complex/cyclosome (APC/C), a cell cycle-regulated ubiquitin ligase that controls progression through mitosis. Acts by initiating 'Lys-11'-linked polyubiquitin chains on APC/C substrates, leading to the degradation of APC/C substrates by the proteasome and promoting mitotic exit.

Anti-UBE2C Rabbit Monoclonal Antibody - Protocols

Provided below are standard protocols that you may find useful for product applications.

- [Western Blot](#)
- [Blocking Peptides](#)
- [Dot Blot](#)
- [Immunohistochemistry](#)
- [Immunofluorescence](#)
- [Immunoprecipitation](#)
- [Flow Cytometry](#)
- [Cell Culture](#)

Anti-UBE2C Rabbit Monoclonal Antibody - Images



Western blot analysis of UBE2C expression in MCF7 cell lysate.