

Anti-CLPP Rabbit Monoclonal Antibody Catalog # ABO15878

Specification

Anti-CLPP Rabbit Monoclonal Antibody - Product Information

Application	WB, IHC, IP
Primary Accession	Q16740
Host	Rabbit
Isotype	IgG
Reactivity	Rat, Human, Mouse
Clonality	Monoclonal
Format	Liquid

Description

Anti-CLPP Rabbit Monoclonal Antibody . Tested in WB, IHC, IP applications. This antibody reacts with Human, Mouse, Rat.

Anti-CLPP Rabbit Monoclonal Antibody - Additional Information

Gene ID 8192

Other Names

ATP-dependent Clp protease proteolytic subunit, mitochondrial, 3.4.21.92, Endopeptidase Clp, CLPP

Calculated MW

26 kDa KDa

Application Details

WB 1:500-1:2000
IHC 1:50-1:200
IP 1:50

Contents

Rabbit IgG in phosphate buffered saline, pH 7.4, 150mM NaCl, 0.02% sodium azide and 50% glycerol, 0.4-0.5mg/ml BSA.

Immunogen

A synthesized peptide derived from human CLPP

Purification

Affinity-chromatography

Storage

Store at -20°C for one year. For short term storage and frequent use, store at 4°C for up to one month. Avoid repeated freeze-thaw cycles.

Anti-CLPP Rabbit Monoclonal Antibody - Protein Information

Name CLPP ([HGNC:2084](#))

Function

Protease component of the ClpXP complex that cleaves peptides and various proteins in an ATP-dependent process. Has low peptidase activity in the absence of CLPX. The ClpXP complex can degrade CSN1S1, CSN2 and CSN3, as well as synthetic peptides (in vitro) and may be responsible for a fairly general and central housekeeping function rather than for the degradation of specific substrates (PubMed: [11923310](http://www.uniprot.org/citations/11923310), PubMed: [15522782](http://www.uniprot.org/citations/15522782)). Cleaves PINK1 in the mitochondrion (PubMed: [22354088](http://www.uniprot.org/citations/22354088)).

Cellular Location

Mitochondrion matrix

Tissue Location

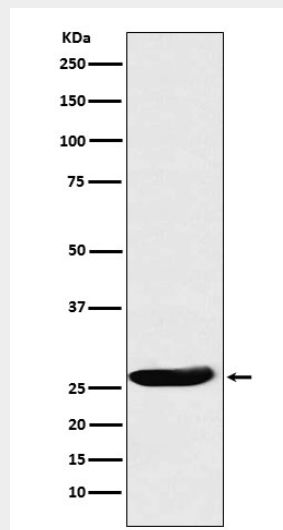
Detected in liver (at protein level). Predominantly expressed in skeletal muscle. Intermediate levels in heart, liver and pancreas. Low in brain, placenta, lung and kidney

Anti-CLPP Rabbit Monoclonal Antibody - Protocols

Provided below are standard protocols that you may find useful for product applications.

- [Western Blot](#)
- [Blocking Peptides](#)
- [Dot Blot](#)
- [Immunohistochemistry](#)
- [Immunofluorescence](#)
- [Immunoprecipitation](#)
- [Flow Cytometry](#)
- [Cell Culture](#)

Anti-CLPP Rabbit Monoclonal Antibody - Images



Western blot analysis of CLPP expression in A431 cell lysate.