

Anti-ZNF217 Rabbit Monoclonal Antibody
Catalog # ABO15871**Specification**

Anti-ZNF217 Rabbit Monoclonal Antibody - Product Information

Application	WB
Primary Accession	O75362
Host	Rabbit
Isotype	IgG
Reactivity	Human
Clonality	Monoclonal
Format	Liquid

Description

Anti-ZNF217 Rabbit Monoclonal Antibody . Tested in WB application. This antibody reacts with Human.

Anti-ZNF217 Rabbit Monoclonal Antibody - Additional Information

Gene ID 7764

Other Names

Zinc finger protein 217, ZNF217, ZABC1

Calculated MW

125 kDa KDa

Application Details

WB 1:500-1:2000

Contents

Rabbit IgG in phosphate buffered saline, pH 7.4, 150mM NaCl, 0.02% sodium azide and 50% glycerol, 0.4-0.5mg/ml BSA.

Immunogen

A synthesized peptide derived from human ZNF217

Purification

Affinity-chromatography

Storage

Store at -20°C for one year. For short term storage and frequent use, store at 4°C for up to one month. Avoid repeated freeze-thaw cycles.

Anti-ZNF217 Rabbit Monoclonal Antibody - Protein Information

Name ZNF217

Synonyms ZABC1

Function

Binds to the promoters of target genes and functions as repressor. Promotes cell proliferation and antagonizes cell death. Promotes phosphorylation of AKT1 at 'Ser-473'.

Cellular Location

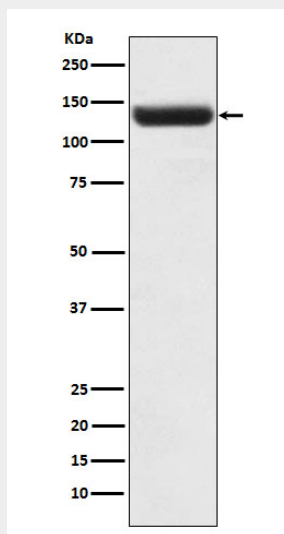
Nucleus.

Anti-ZNF217 Rabbit Monoclonal Antibody - Protocols

Provided below are standard protocols that you may find useful for product applications.

- [Western Blot](#)
- [Blocking Peptides](#)
- [Dot Blot](#)
- [Immunohistochemistry](#)
- [Immunofluorescence](#)
- [Immunoprecipitation](#)
- [Flow Cytometry](#)
- [Cell Culture](#)

Anti-ZNF217 Rabbit Monoclonal Antibody - Images



Western blot analysis of ZNF217 expression in Caco2 cell lysate.