

## Anti-TMEFF2 Rabbit Monoclonal Antibody Catalog # ABO15868

### Specification

---

#### Anti-TMEFF2 Rabbit Monoclonal Antibody - Product Information

Application	WB, IHC, IF, ICC, FC
Primary Accession	<a href="#">O9UIK5</a>
Host	Rabbit
Isotype	IgG
Reactivity	Human
Clonality	Monoclonal
Format	Liquid

#### Description

Anti-TMEFF2 Rabbit Monoclonal Antibody . Tested in WB, IHC, ICC/IF, Flow Cytometry applications. This antibody reacts with Human.

#### Anti-TMEFF2 Rabbit Monoclonal Antibody - Additional Information

Gene ID 23671

#### Other Names

Tomoregulin-2, TR-2, Hyperplastic polyposis protein 1, Transmembrane protein with EGF-like and two follistatin-like domains, TMEFF2, HPP1, TENB2, TPEF

#### Calculated MW

41 kDa KDa

#### Application Details

WB 1:500-1:2000<br>IHC 1:50-1:200<br>ICC/IF 1:50-1:200<br>FC 1:50

#### Contents

Rabbit IgG in phosphate buffered saline, pH 7.4, 150mM NaCl, 0.02% sodium azide and 50% glycerol, 0.4-0.5mg/ml BSA.

#### Immunogen

A synthesized peptide derived from human TMEFF2

#### Purification

Affinity-chromatography

#### Storage

**Store at -20°C for one year. For short term storage and frequent use, store at 4°C for up to one month. Avoid repeated freeze-thaw cycles.**

#### Anti-TMEFF2 Rabbit Monoclonal Antibody - Protein Information

Name TMEFF2

**Synonyms** HPP1, TENB2, TPEF

**Function**

May be a survival factor for hippocampal and mesencephalic neurons. The shedded form up-regulates cancer cell proliferation, probably by promoting ERK1/2 phosphorylation.

**Cellular Location**

[Isoform 1]: Membrane; Single-pass type I membrane protein [Isoform 3]: Secreted.

**Tissue Location**

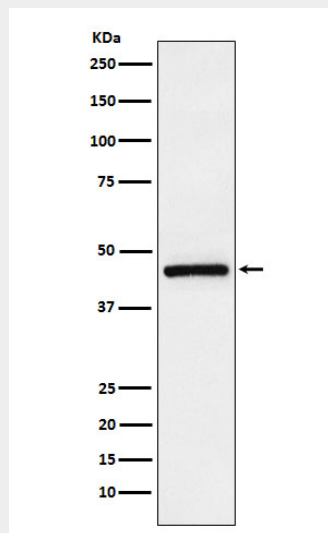
Highly expressed in adult and fetal brain, spinal cord and prostate. Expressed in all brain regions except the pituitary gland, with highest levels in amygdala and corpus callosum. Expressed in the pericryptal myofibroblasts and other stromal cells of normal colonic mucosa. Expressed in prostate carcinoma. Down-regulated in colorectal cancer. Present in Alzheimer disease plaques (at protein level). Isoform 3 is expressed weakly in testis and at high levels in normal and cancerous prostate.

**Anti-TMEFF2 Rabbit Monoclonal Antibody - Protocols**

Provided below are standard protocols that you may find useful for product applications.

- [Western Blot](#)
- [Blocking Peptides](#)
- [Dot Blot](#)
- [Immunohistochemistry](#)
- [Immunofluorescence](#)
- [Immunoprecipitation](#)
- [Flow Cytometry](#)
- [Cell Culture](#)

**Anti-TMEFF2 Rabbit Monoclonal Antibody - Images**



Western blot analysis of TMEFF2 expression in LnCaP cell lysate.