

Anti-FRA2 Rabbit Monoclonal Antibody Catalog # ABO15867

Specification

Anti-FRA2 Rabbit Monoclonal Antibody - Product Information

Application	WB, IP, FC
Primary Accession	P15408
Host	Rabbit
Isotype	IgG
Reactivity	Rat, Human, Mouse
Clonality	Monoclonal
Format	Liquid

Description

Anti-FRA2 Rabbit Monoclonal Antibody . Tested in WB, IP, Flow Cytometry applications. This antibody reacts with Human, Mouse, Rat.

Anti-FRA2 Rabbit Monoclonal Antibody - Additional Information

Gene ID 2355

Other Names

Fos-related antigen 2, FRA-2, FOSL2, FRA2

Calculated MW

45 kDa KDa

Application Details

WB 1:500-1:2000
IP 1:50
FC 1:100

Contents

Rabbit IgG in phosphate buffered saline, pH 7.4, 150mM NaCl, 0.02% sodium azide and 50% glycerol, 0.4-0.5mg/ml BSA.

Immunogen

A synthesized peptide derived from human FRA2

Purification

Affinity-chromatography

Storage

Store at -20°C for one year. For short term storage and frequent use, store at 4°C for up to one month. Avoid repeated freeze-thaw cycles.

Anti-FRA2 Rabbit Monoclonal Antibody - Protein Information

Name FOSL2

Synonyms FRA2

Function

Controls osteoclast survival and size (By similarity). As a dimer with JUN, activates LIF transcription (By similarity). Activates CEBPB transcription in PGE2-activated osteoblasts (By similarity).

Cellular Location

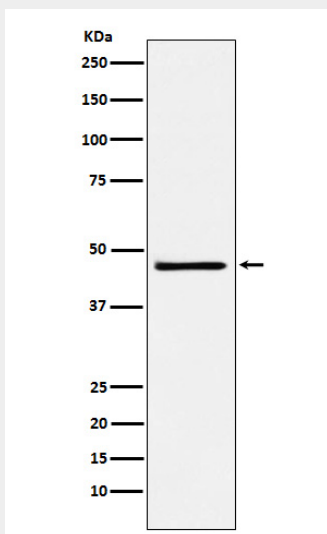
Nucleus {ECO:0000250|UniProtKB:P51145}.

Anti-FRA2 Rabbit Monoclonal Antibody - Protocols

Provided below are standard protocols that you may find useful for product applications.

- [Western Blot](#)
- [Blocking Peptides](#)
- [Dot Blot](#)
- [Immunohistochemistry](#)
- [Immunofluorescence](#)
- [Immunoprecipitation](#)
- [Flow Cytometry](#)
- [Cell Culture](#)

Anti-FRA2 Rabbit Monoclonal Antibody - Images



Western blot analysis of FRA2 expression in NCCIT cell lysate.