

Anti-RAD52 Rabbit Monoclonal Antibody
Catalog # ABO15866**Specification**

Anti-RAD52 Rabbit Monoclonal Antibody - Product Information

Application	WB
Primary Accession	P43351
Host	Rabbit
Isotype	IgG
Reactivity	Human
Clonality	Monoclonal
Format	Liquid

Description

Anti-RAD52 Rabbit Monoclonal Antibody . Tested in WB application. This antibody reacts with Human.

Anti-RAD52 Rabbit Monoclonal Antibody - Additional Information

Gene ID 5893

Other Names

DNA repair protein RAD52 homolog, RAD52

Calculated MW

48 kDa KDa

Application Details

WB 1:500-1:2000

Contents

Rabbit IgG in phosphate buffered saline, pH 7.4, 150mM NaCl, 0.02% sodium azide and 50% glycerol, 0.4-0.5mg/ml BSA.

Immunogen

A synthesized peptide derived from human RAD52

Purification

Affinity-chromatography

Storage

Store at -20°C for one year. For short term storage and frequent use, store at 4°C for up to one month. Avoid repeated freeze-thaw cycles.

Anti-RAD52 Rabbit Monoclonal Antibody - Protein Information

Name RAD52

Function

Involved in double-stranded break repair. Plays a central role in genetic recombination and DNA repair by promoting the annealing of complementary single-stranded DNA and by stimulation of the RAD51 recombinase.

Cellular Location

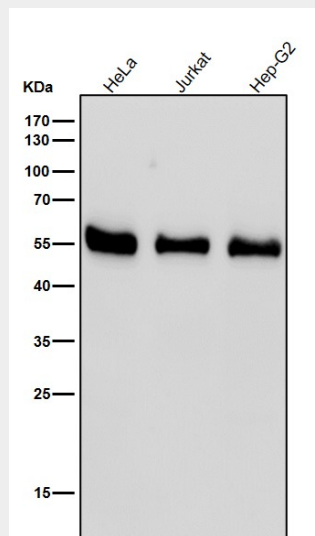
Nucleus.

Anti-RAD52 Rabbit Monoclonal Antibody - Protocols

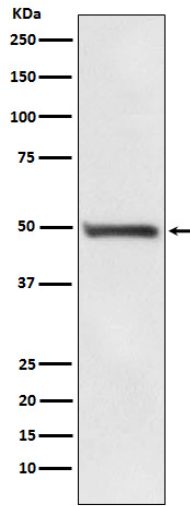
Provided below are standard protocols that you may find useful for product applications.

- [Western Blot](#)
- [Blocking Peptides](#)
- [Dot Blot](#)
- [Immunohistochemistry](#)
- [Immunofluorescence](#)
- [Immunoprecipitation](#)
- [Flow Cytometry](#)
- [Cell Culture](#)

Anti-RAD52 Rabbit Monoclonal Antibody - Images



All lanes use the Antibody at 1:1K dilution for 1 hour at room temperature.



Western blot analysis of RAD52 expression in PC3 cell lysate.